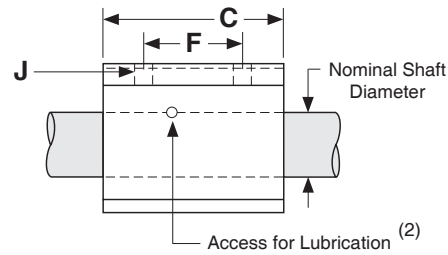
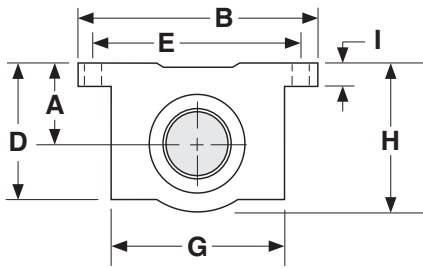


Dimensions & Specifications: **SLBCH** Single Linear Bearing Closed Pillow Block (self-aligning)

Model Number	Nominal Shaft Diameter (inches)	Dyn. ⁽¹⁾ Load Capacity (lbs)	Dimensions (inches)											Block Weight (lbs)
			A	B	C	D	E	F	G	H	I	J		
			+/- .003				+/- .010	+/- .010					hole	
SLBCH-12	0.750	1,130	0.937	2.75	2.06	1.56	2.375	1.250	1.88	1.75	.31	.19	# 8	0.60
SLBCH-16	1.000	1,900	1.187	3.25	2.81	1.94	2.875	1.750	2.38	2.19	.38	.22	#10	1.20
SLBCH-20	1.250	2,350	1.500	4.00	3.63	2.50	3.500	2.000	3.00	2.81	.44	.22	#10	2.50
SLBCH-24	1.500	3,880	1.750	4.75	4.00	2.88	4.125	2.500	3.50	3.25	.50	.28	1/4	3.80



Access for Lubrication ⁽²⁾

Footnotes:

(1) Rating based upon 2 million inches of travel with the load forces being applied downward on the linear bearing, while in a horizontal application, and based upon 1060 steel shafting (Rockwell 60C).

(2) Sizes 0.750 and above have a 1/4-28 UNF straight thread access for lubrication.