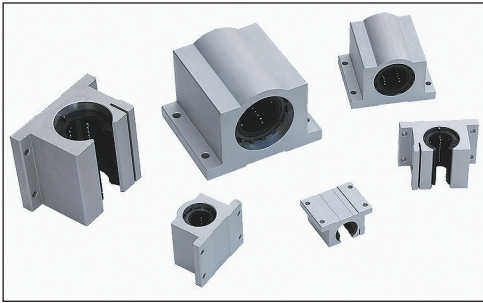


Ordering Guide - Inch Diameters - SLBCH, SLBOH, DLBCH & DLBOH Series



SLBCH - **12** - **CR** - **L**

Pillow Block Series

- SLBCH** - One LBCH bushing per pillow block
- DLBCH** - Two LBCH bushings per pillow block
- SLBOH** - One LBOH bushing per pillow block
- DLBOH** - Two LBOH bushings per pillow block

Nominal Diameter

- 12** - 0.750 inch diameter
- 16** - 1.000 inch diameter
- 20** - 1.250 inch diameter
- 24** - 1.500 inch diameter

Bearing Options

- Standard
- CR** - Corrosion Resistance

Bearing Lock

- None
- L** - Hand Wheel Lock

Specifications: **SLBCH, SLBOH, DLBCH & DLBOH** Pillow Blocks (self-aligning)

Bearing Housing Type & Finish	Aluminum 6061-T6 Pillow Block, Clear Anodized										
Bearing Seals	Internal Wiper Seals on Both Ends										
Corrosion Resistance	Electroless nickel plated load bushing plates and stainless steel recirculating balls										
Hand Wheel Lock	Optional Aluminum Shaft Clamping Block										
Operating Temperature	0° F to + 185° F										
Maximum Speed	9.8 ft/second (3m/sec)										
Matching Shaft	Class L (SL series), hardened & ground shafting										
Diameter Tolerance	<table border="1"> <thead> <tr> <th>Nominal Shaft Diameter (inches)</th> <th>Shaft Diameter Tolerance (inches)</th> </tr> </thead> <tbody> <tr> <td>0.750</td> <td>.7495 / .7490</td> </tr> <tr> <td>1.000</td> <td>.9995 / .9990</td> </tr> <tr> <td>1.250</td> <td>1.2495 / 1.2490</td> </tr> <tr> <td>1.500</td> <td>1.4994 / 1.4989</td> </tr> </tbody> </table>	Nominal Shaft Diameter (inches)	Shaft Diameter Tolerance (inches)	0.750	.7495 / .7490	1.000	.9995 / .9990	1.250	1.2495 / 1.2490	1.500	1.4994 / 1.4989
Nominal Shaft Diameter (inches)	Shaft Diameter Tolerance (inches)										
0.750	.7495 / .7490										
1.000	.9995 / .9990										
1.250	1.2495 / 1.2490										
1.500	1.4994 / 1.4989										