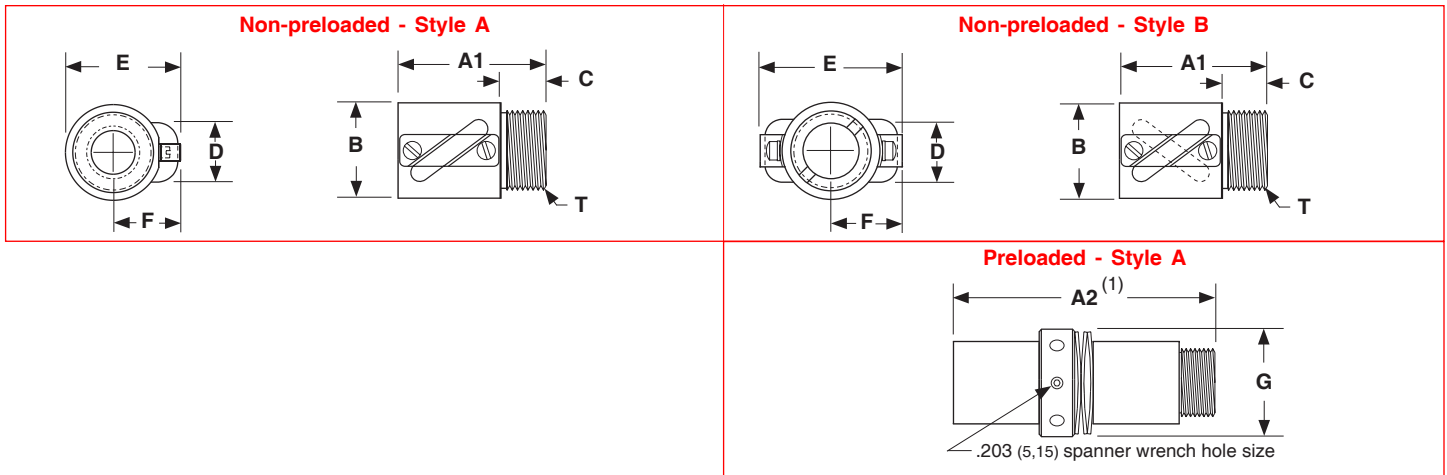
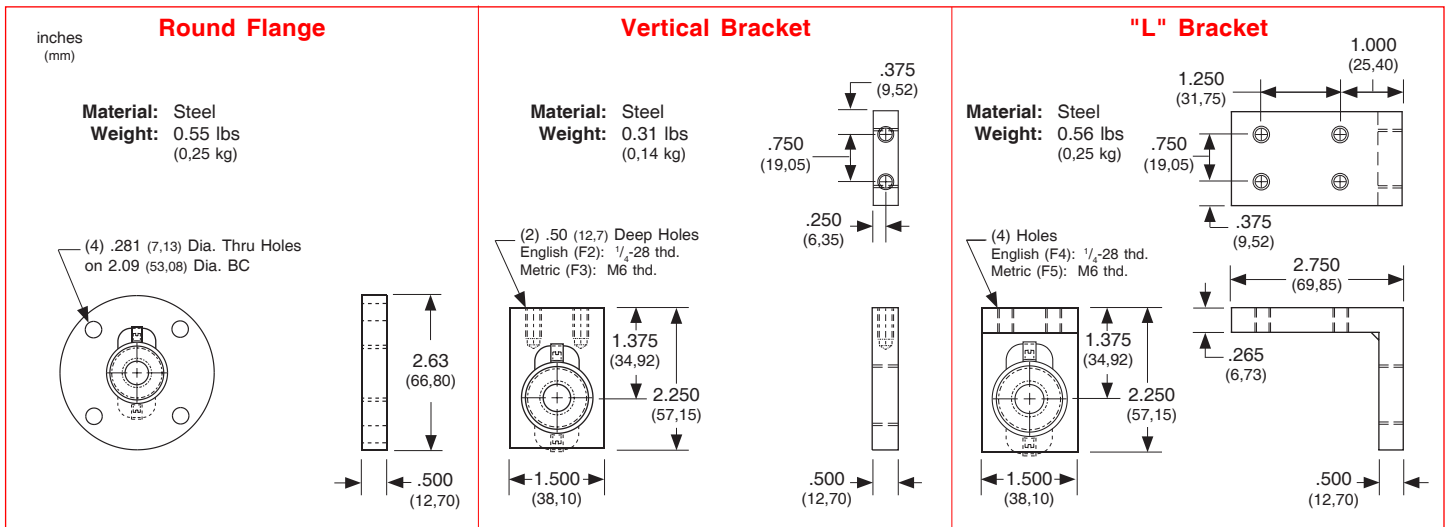


Nut Dimensions



Nut Flange Dimensions



Model Number	Nut Style	Nut Dimensions inches (mm)									Nut Weight lbs (kg)
		A1	A2 ⁽¹⁾	B	C	D	E	F	T - "V" Threads ⁽²⁾	G	
PS075020	A	1.780 (45,21)	3.850 (97,79)	1.378 (35,00)	0.500 (12,70)	1.063 (27,00)	1.674 (42,52)	0.985 (25,02)	1.173 - 18 UNS-2A (29,79 - 18 UNS-2A)	1.670 (42,42)	0.68 (0,31)
PS20M05M	A	1.780 (45,21)	3.850 (97,79)	1.378 (35,00)	0.500 (12,70)	1.063 (27,00)	1.674 (42,52)	0.985 (25,02)	1.173 - 18 UNS-2A (29,79 - 18 UNS-2A)	1.670 (42,42)	0.68 (0,31)
PS20M20M	B	2.370 (60,20)	5.050 (128,27)	1.418 (36,02)	0.500 (12,70)	1.103 (28,02)	2.126 (54,00)	1.063 (27,00)	1 1/4 - 16 UN-2A (31,75 - 16 UN-2A)	1.670 (42,42)	0.90 (0,41)

Footnotes:

- (1) This is the length for a preloaded nut. Preloaded nut consists of two (2) non-preloaded nuts with a locking spanner nut, and belville springs.
- (2) All flange threads are internal (Type 2B) to match the external nut threads.
- (3) Weight of the non-preloaded nut. Multiply value by 2.1 to obtain the weight for the preloaded nut assembly.