

**TRCA** - **12** - **12** - **CR** - **P** - **L1**

**TWIN RAIL® Carriage Assembly series**

**TRCA** - Plate with mounted SLBO or DLBO

**Nominal Bearing Diameter**

- 8** - 0.500 inch diameter
- 10** - 0.625 inch diameter
- 12** - 0.750 inch diameter
- 16** - 1.000 inch diameter
- 20** - 1.250 inch diameter
- 24** - 1.500 inch diameter
- 32** - 2.000 inch diameter

**Carriage Plate Length**

- 6** - 6 inches
- 8** - 8 inches
- 12** - 12 inches
- 18** - 18 inches
- 24** - 24 inches
- 30** - 30 inches

**Bearing Options**

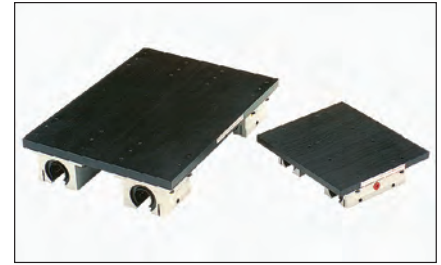
- Standard
- CR** - Corrosion resistant

**Carriage Plate Mounting**

- No Holes
- P** - Pre-Machined Mounting holes

**Bearing Lock**

- None
- Lx** - Hand wheel locks (x = number of locks - 1, 2, 3 or 4)



**Specifications: TRCA TWIN RAIL® Carriage Assembly**

<b>Bearing Housing Type &amp; Finish</b>	Aluminum 6061-T6 Pillow Block, Clear Anodized																	
<b>Bearing Seals</b>	Internal Wiper Seals on Both Ends																	
<b>Carriage Plate Type &amp; Finish</b>	Machined Aluminum 6061-T6 Plate, Black Anodized																	
<b>Bearing Alignment on Plate</b>	+/- 0.001", Pillow Blocks Doweled to Carriage Plate																	
<b>Operating Temperature</b>	0° F to + 185° F																	
<b>Maximum Speed</b>	9 ft/second																	
<b>Matching Shaft Assembly</b>	<b>TRSA</b> series (see page 47)																	
<b>Diameter Tolerance</b>	<table border="1"> <thead> <tr> <th>Nominal Shaft Diameter (inches)</th> <th>Shaft Diameter Tolerance (inches)</th> </tr> </thead> <tbody> <tr> <td>0.500</td> <td>.4995 / .4990</td> </tr> <tr> <td>0.625</td> <td>.6245 / .6240</td> </tr> <tr> <td>0.750</td> <td>.7495 / .7490</td> </tr> <tr> <td>1.000</td> <td>.9995 / .9990</td> </tr> <tr> <td>1.250</td> <td>1.2495 / 1.2490</td> </tr> <tr> <td>1.500</td> <td>1.4994 / 1.4989</td> </tr> <tr> <td>2.000</td> <td>1.9994 / 1.9987</td> </tr> </tbody> </table>	Nominal Shaft Diameter (inches)	Shaft Diameter Tolerance (inches)	0.500	.4995 / .4990	0.625	.6245 / .6240	0.750	.7495 / .7490	1.000	.9995 / .9990	1.250	1.2495 / 1.2490	1.500	1.4994 / 1.4989	2.000	1.9994 / 1.9987	
Nominal Shaft Diameter (inches)	Shaft Diameter Tolerance (inches)																	
0.500	.4995 / .4990																	
0.625	.6245 / .6240																	
0.750	.7495 / .7490																	
1.000	.9995 / .9990																	
1.250	1.2495 / 1.2490																	
1.500	1.4994 / 1.4989																	
2.000	1.9994 / 1.9987																	

Specifications subject to change without notice

## Dimensions & Specifications: TRCA TWIN RAIL® Carriage Assembly

Model Number	Nom. Shaft Dia. (inches)	Dyn. Load Cap. (lbs)	Dimensions (inches)													Assembly Weight (lbs)
			A +/- .005	B +/- .005	C	D	E	F	G	H	J	K	d <sub>r</sub> <sup>(2)</sup>	d <sub>1</sub> <sup>(3)</sup>	d <sub>2</sub> <sup>(4)</sup>	
TRCA8-6	0.500	920	6.00	5.50	1.25	0.75	0.68	1.12	2.00	.25	3.50	0.375	1.062	3.00	1.90	2.4
TRCA8-12	0.500	920	12.00	5.50	0.25	0.75	0.68	1.12	2.00	.25	11.50	0.375	1.062	3.00	10.00	4.6
TRCA8-18	0.500	920	18.00	5.50	0.25	0.75	0.68	1.12	2.00	.25	17.50	0.375	1.062	3.00	16.00	5.9
TRCA10-6	0.625	1,280	6.00	6.75	1.00	0.93	0.87	1.43	2.50	.25	4.00	0.375	1.250	3.75	2.15	3.5
TRCA10-12	0.625	1,280	12.00	6.75	0.25	0.93	0.87	1.43	2.50	.25	11.50	0.375	1.250	3.75	9.75	6.0
TRCA10-18	0.625	1,280	18.00	6.75	0.25	0.93	0.87	1.43	2.50	.25	17.50	0.375	1.250	3.75	15.75	7.7
TRCA12-6	0.750	1,880	6.00	7.75	0.75	1.00	0.93	1.56	2.75	.25	4.50	0.500	1.437	4.50	2.50	4.8
TRCA12-12	0.750	1,880	12.00	7.75	0.25	1.00	0.93	1.56	2.75	.25	11.49	0.500	1.437	4.50	9.62	8.2
TRCA12-18	0.750	1,880	18.00	7.75	0.25	1.00	0.93	1.56	2.75	.25	17.49	0.500	1.437	4.50	15.62	10.7
TRCA16-6	1.000	3,120	6.00	9.00	0.00	1.25	1.18	2.00	3.25	.25	6.00	0.500	1.687	5.25	3.25	7.2
TRCA16-12	1.000	3,120	12.00	9.00	0.25	1.25	1.18	2.00	3.25	.25	11.49	0.500	1.687	5.25	8.87	11.0
TRCA16-18	1.000	3,120	18.00	9.00	0.25	1.25	1.18	2.00	3.25	.25	17.49	0.500	1.687	5.25	14.87	14.0
TRCA16-24	1.000	3,120	24.00	9.00	0.25	1.25	1.18	2.00	3.25	.25	23.49	0.500	1.687	5.25	20.87	16.9
TRCA20-8	1.250	4,680	8.00	10.50	0.25	1.62	1.50	2.56	4.00	.25	7.50	0.750	2.250	6.00	3.90	16.0
TRCA20-12	1.250	4,680	12.00	10.50	0.25	1.62	1.50	2.56	4.00	.25	11.49	0.750	2.250	6.00	8.12	16.4
TRCA20-18	1.250	4,680	18.00	10.50	0.25	1.62	1.50	2.56	4.00	.25	17.49	0.750	2.250	6.00	14.12	21.6
TRCA20-24	1.250	4,680	24.00	10.50	0.25	1.62	1.50	2.56	4.00	.25	23.49	0.750	2.250	6.00	20.12	26.8
TRCA24-12	1.500	6,240	12.00	12.00	1.50	1.87	1.75	2.93	4.75	.31	9.00	1.000	2.750	6.62	5.00	30.0
TRCA24-18	1.500	6,240	18.00	12.00	0.25	1.87	1.75	2.93	4.75	.31	17.50	1.000	2.750	6.62	13.75	40.2
TRCA24-24	1.500	6,240	24.00	12.00	0.25	1.87	1.75	2.93	4.75	.31	23.50	1.000	2.750	6.62	19.75	48.1
TRCA24-30	1.500	6,240	30.00	12.00	0.25	1.87	1.75	2.93	4.75	.31	29.50	1.000	2.750	6.62	25.75	56.0
TRCA32-18	2.000	9,400	18.00	14.00	0.25	2.43	2.25	3.62	6.00	.37	17.50	1.250	3.375	7.25	12.75	61.7
TRCA32-24	2.000	9,400	24.00	14.00	0.25	2.43	2.25	3.62	6.00	.37	23.50	1.250	3.375	7.25	18.75	73.2
TRCA32-30	2.000	9,400	30.00	14.00	0.25	2.43	2.25	3.62	6.00	.37	29.50	1.250	3.375	7.25	24.75	84.8

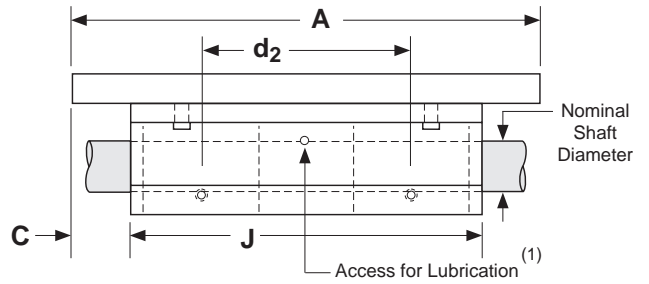
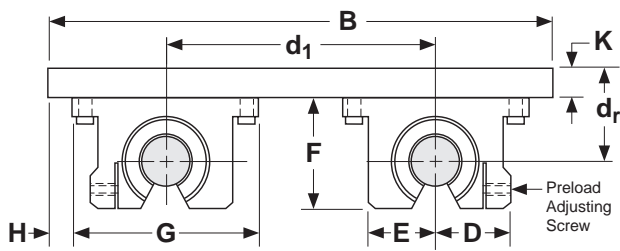
### Footnotes:

- (1) Rating based upon 2 million inches of travel with the load forces being applied downward on the linear bearing, while in a horizontal application, and based upon 1060 steel shafting (Rockwell 60C). The actual load rating, and life, is dependent upon factors detailed on pages 6 to 11.
- (2) This value is the center distance of the bearing to the top of the carriage plate surface (d<sub>r</sub>).
- (3) This value is the center to center distance (spread) between the rails (d<sub>1</sub>).
- (4) This value is the center to center distance (spacing) of the bearings on a single shaft (d<sub>2</sub>).

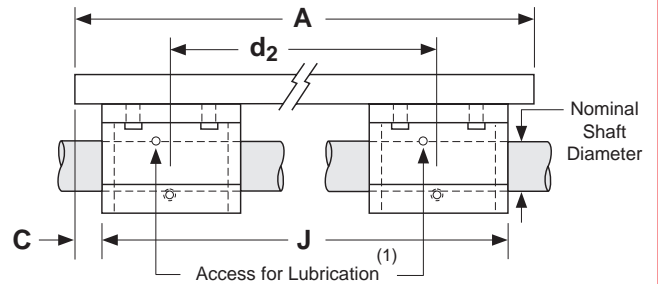
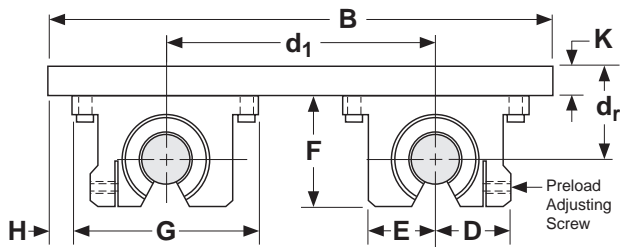
Dimensions

(inches)

**Available For:**  
 TRCA8-6, TRCA10-6, TRCA12-6,  
 TRCA16-6, TRCA20-8, TRCA24-12



**Available For:**  
 All other TRCA models,  
 not shown above



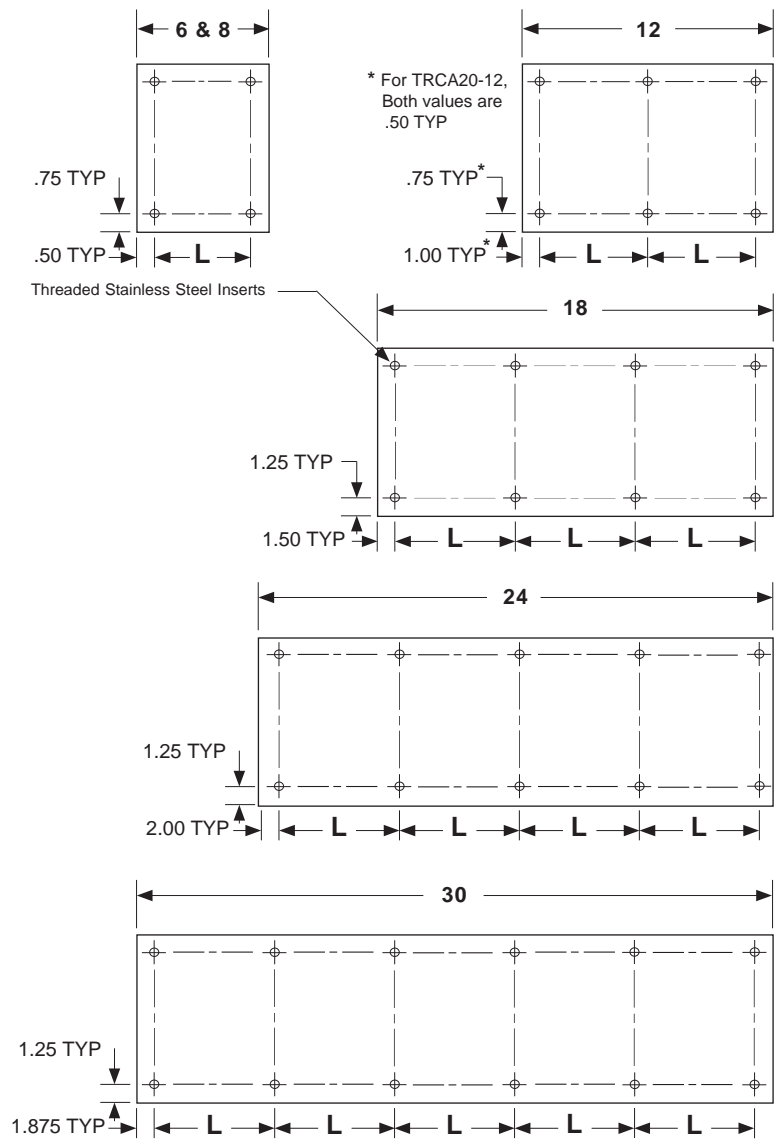
Footnotes:

(1) Size 0.500 has oil lubricant fitting. Sizes 0.625 and above have a 1/4-28 UNF straight thread access for lubrication.

### ( -P ) Pre-Machined Carriage Mounting Holes

All carriage assembly plates are available with a pre-determined number & location of mounting holes. These holes consist of stainless steel threaded inserts per the below chart. Custom mounting patterns are available upon request.

Model Number	Carriage Length (inches)	L (inches)	Threaded Insert Size																																															
TRCA8-6-P	6.00	5.00	#10-32																																															
TRCA8-12-P	12.00	5.00	#10-32																																															
TRCA8-18-P	18.00	5.00	#10-32																																															
TRCA10-6-P	6.00	5.00	#10-32																																															
TRCA10-12-P	12.00	5.00	#10-32																																															
TRCA10-18-P	18.00	5.50	#10-32																																															
TRCA12-6-P	6.00	5.00	1/4-28																																															
TRCA12-12-P	12.00	5.00	1/4-28																																															
TRCA12-18-P	18.00	5.50	1/4-28																																															
TRCA16-6-P	6.00	5.00	5/16-24																																															
TRCA16-12-P	12.00	5.00	5/16-24																																															
TRCA16-18-P	18.00 <td 5.00	5/16-24	TRCA16-24-P	24.00	5.00	5/16-24	TRCA20-8-P	8.00	7.00	3/8-24	TRCA20-12-P	12.00	5.00	3/8-24	TRCA20-18-P	18.00	5.00	3/8-24	TRCA20-24-P	24.00	5.00	3/8-24	TRCA24-12-P	12.00	5.00	3/8-24	TRCA24-18-P	18.00	5.00	3/8-24	TRCA24-24-P	24.00	5.00	3/8-24	TRCA24-30-P	30.00	5.25	3/8-24	TRCA32-18-P	18.00	5.00	1/2-20	TRCA32-24-P	24.00	5.00	1/2-20	TRCA32-30-P	30.00	5.25	1/2-20
TRCA16-24-P	24.00	5.00	5/16-24																																															
TRCA20-8-P	8.00	7.00	3/8-24																																															
TRCA20-12-P	12.00	5.00	3/8-24																																															
TRCA20-18-P	18.00	5.00	3/8-24																																															
TRCA20-24-P	24.00	5.00	3/8-24																																															
TRCA24-12-P	12.00	5.00	3/8-24																																															
TRCA24-18-P	18.00	5.00	3/8-24																																															
TRCA24-24-P	24.00	5.00	3/8-24																																															
TRCA24-30-P	30.00	5.25	3/8-24																																															
TRCA32-18-P	18.00	5.00	1/2-20																																															
TRCA32-24-P	24.00	5.00	1/2-20																																															
TRCA32-30-P	30.00	5.25	1/2-20																																															

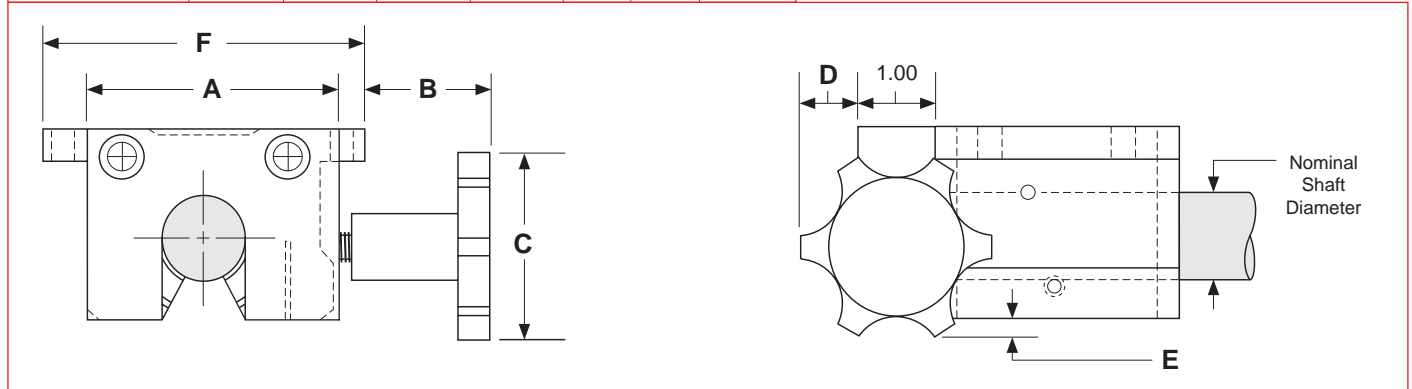


# Options

## ( -L ) Hand Wheel Lock

This option adds an aluminum clamping block to the end of a pillow block, which then provides for a manual lock of the bearing to the shaft. The threaded hand wheel shaft presses into a bronze insert which makes contact to provide a "pressure lock" to the shaft. The threaded steel screw will not back drive and does not make physical contact with the steel shaft (no steel to steel contact). The lock will be installed as shown below when ordered with a SLBC, SLBO, DLBC, DLBO, or TRCA series. Multiple locks can be installed onto a TRCA assembly.

Nominal Shaft Diameter (inches)	Dimensions (inches)						
	A	B	C	D	E		F
					open	closed	
8 - 0.500	1.680	1.72	2.00	0.50	.56	.44	2.00
10 - 0.625	1.875	1.53	2.00	0.50	.50	.31	2.50
12 - 0.750	2.067	1.46	2.00	0.50	.37	.18	2.75
16 - 1.000	2.312	1.34	2.00	0.50	.19	---	3.25
20 - 1.250	3.125	1.66	2.50	0.75	.17	---	4.00
24 - 1.500	3.625	1.46	2.50	0.75	.05	---	4.75
32 - 2.000	4.600	1.45	2.50	0.75	---	---	6.00



## Custom Carriage Sizes

Custom carriage sizes that need to be wider, or longer than shown in this catalog can be provided upon request. This will allow for larger rail and bearing spacing ( $d_1$  &  $d_2$  dimensions).

## Custom Carriage Material & Finishes

The standard carriage material is aluminum with a black anodized finish. Aluminum plates can be finished in many different colors, while steel carriage plates can be provided with a black oxide finish. Many other custom alternatives for carriage plates are available.

## Special Grease Options

Bearings can be supplied with special greases, or lubricants, in order to meet the environmental requirements of the application. Examples of operating environments which may require a special lubricant include: high or low temperature, clean rooms, vacuums and food grade applications.

Specifications subject to change without notice