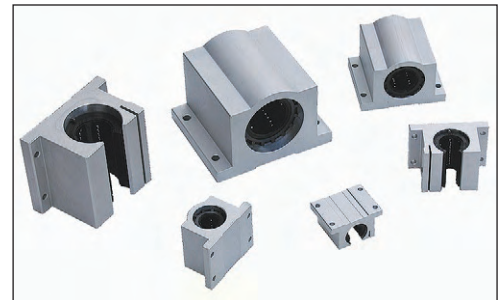
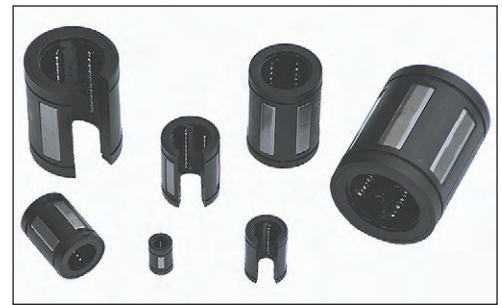


Linear Bearings, Pillow Blocks and Carriage Assemblies

LBCA & LBOA Series Ordering Guide	B-1
LBCA & LBOA Series Dimensions	B-2
LBC & LBO Series Ordering Guide	B-3
LBC & LBO Series Dimensions	B-4
Pillow Block Ordering Guide	B-5
Pillow Block Dimensions	B-6
TRCA Series Ordering Guide	B-8
TRCA Series Dimensions	B-9
Options	B-12
Metric Bearings - Asian Style	B-13
Metric Bearings - European Style	B-14



LBCA - **12** - **S**

Linear Bearing Series

- LBCA** - One Precision linear bearing (closed - all steel)
- LBOA** - One Precision linear bearing (open - all steel)

Nominal Diameter

- 4** - 0.250 inch diameter
- 6** - 0.375 inch diameter
- 8** - 0.500 inch diameter
- 10** - 0.625 inch diameter
- 12** - 0.750 inch diameter
- 16** - 1.000 inch diameter
- 20** - 1.250 inch diameter
- 24** - 1.500 inch diameter
- 32** - 2.000 inch diameter

Wiper Seals

- No seals
- S** - Seals at both ends



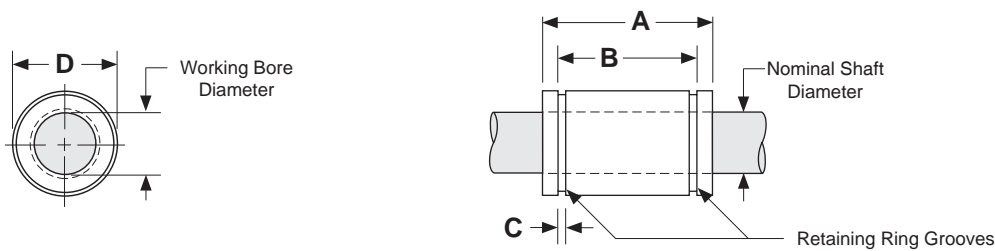
Specifications: LBCA & LBOA Linear Bearings

Operating Temperature	0° F to +600° F (without seals)		0° F to +185° F (with seals)		
Maximum Speed	10 ft/second				
Bearing Seals (optional)	Internal Wiper Seals on both ends, Plastic Bearing Retainer				
Matching Shaft	Class S (SS series), hardened & ground shafting (see pages C1 & C2)				
Housing Tolerances C = clearance	LBCA (closed style)			LBOA (open style)	
	Nominal Shaft Diameter (inches)	Recommended Housing Bore		Nominal Shaft Diameter (inches)	Recommended Housing Bore before adjustment (inches)
		Normal Fit (inches)	Press Fit (inches)		
	0.250	.5005 / .5000	.4995 / .4990		
	0.375	.6255 / .6250	.6245 / .6240		
	0.500	.8755 / .8750	.8745 / .8740	0.500	.8760 / .8740
	0.625	1.1255 / 1.1250	1.1245 / 1.1240	0.625	1.1260 / 1.1240
	0.750	1.2505 / 1.2500	1.2495 / 1.2490	0.750	1.2510 / 1.2490
	1.000	1.5630 / 1.5625	1.5620 / 1.5615	1.000	1.5635 / 1.5615
	1.250	2.0010 / 2.0000	1.9993 / 1.9983	1.250	2.0010 / 1.9990
	1.500	2.3760 / 2.3750	2.3743 / 2.3733	1.500	2.3760 / 2.3740
	2.000	3.0010 / 3.0000	2.9992 / 2.9982	2.000	3.0010 / 2.9990
			Bearing and Shaft Fit-up (inches)		
			.0015C / .0005C		
			.0015C / .0005C		
			.0015C / .0005C		
			.0015C / .0005C		
			.0015C / .0005C		
			.0015C / .0004C		
			.0016C / .0005C		
			.0020C / .0005C		

Specifications subject to change without notice

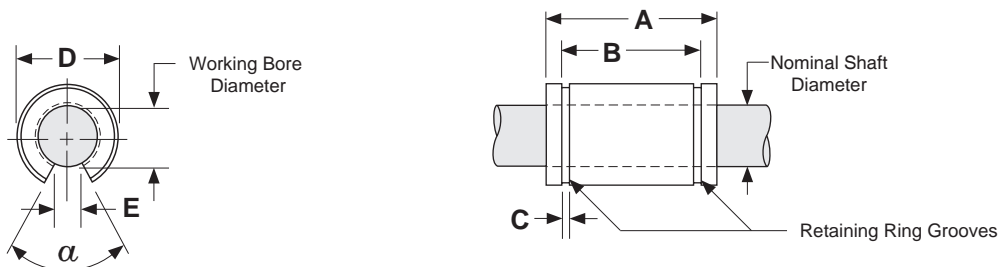
Dimensions & Specifications: **LBCA** Precision Linear Bearing Closed

Model Number		Nominal Shaft Diameter (inches)	Working Bore Diameter (inches)	Dyn. ⁽¹⁾ Load Capacity (lbs)	Dimensions (inches)				Bearing Weight (lbs)
Without Seals	With ⁽²⁾ Seals				A	B	C	D	
LBCA-4	LBCA-4-S	0.250	0.2500/0.2495	19	0.750/0.735	0.515/0.499	0.039	0.5000/0.4996	0.02
LBCA-6	LBCA-6-S	0.375	0.3750/0.3745	37	0.875/0.860	0.640/0.624	0.039	0.6250/0.6246	0.06
LBCA-8	LBCA-8-S	0.500	0.5000/0.4995	85	1.250/1.235	0.967/0.951	0.046	0.8750/0.8746	0.08
LBCA-10	LBCA-10-S	0.625	0.6250/0.6245	150	1.500/1.485	1.108/1.092	0.056	1.1250/1.1246	0.16
LBCA-12	LBCA-12-S	0.750	0.7500/0.7495	200	1.625/1.610	1.170/1.154	0.056	1.2500/1.2496	0.21
LBCA-16	LBCA-16-S	1.000	1.0000/0.9995	350	2.250/2.235	1.759/1.741	0.068	1.5625/1.5621	0.38
LBCA-20	LBCA-20-S	1.250	1.2500/1.2494	520	2.625/2.605	2.009/1.991	0.068	2.0000/1.9995	1.10
LBCA-24	LBCA-24-S	1.500	1.5000/1.4994	770	3.000/2.980	2.415/2.397	0.086	2.3750/2.3745	1.43
LBCA-32	LBCA-32-S	2.000	2.0000/1.9992	1,100	4.000/3.980	3.195/3.177	0.103	3.0000/2.9994	2.75



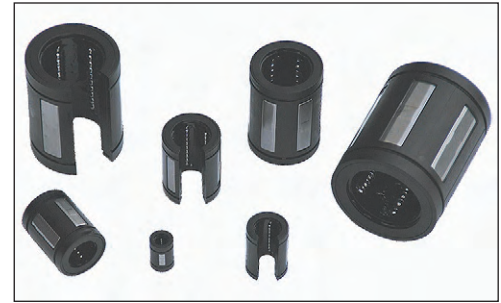
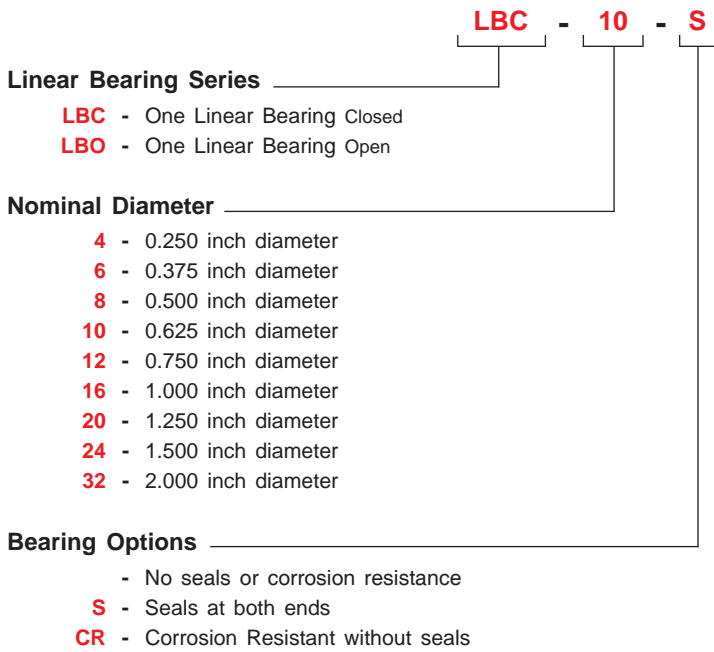
Dimensions & Specifications: **LBOA** Precision Linear Bearing Open

Model Number		Nominal Shaft Dia. (inches)	Working Bore Diameter (inches)	Dyn. ⁽¹⁾ Load Cap. (lbs)	Dimensions (inches)					Bearing Weight (lbs)	Angle α
Without Seals	With ⁽²⁾ Seals				A	B	C	D	E _{min.}		
LBOA-8	LBOA-8-S	0.500	0.5005/0.4995	60	1.250/1.235	0.967/0.951	0.046	0.8760/0.8746	0.31	0.07	50°
LBOA-10	LBOA-10-S	0.625	0.6255/0.6245	105	1.500/1.485	1.108/1.092	0.056	1.1260/1.1240	0.38	0.11	60°
LBOA-12	LBOA-12-S	0.750	0.7505/0.7495	140	1.625/1.610	1.170/1.154	0.056	1.2510/1.2490	0.44	0.17	60°
LBOA-16	LBOA-16-S	1.000	1.0005/0.9995	240	2.250/2.235	1.759/1.741	0.068	1.5635/1.5615	0.56	0.32	60°
LBOA-20	LBOA-20-S	1.250	1.2506/1.2494	400	2.625/2.605	2.009/1.991	0.068	2.0010/1.9990	0.63	0.90	50°
LBOA-24	LBOA-24-S	1.500	1.5006/1.4994	600	3.000/2.980	2.415/2.397	0.086	2.3760/2.3740	0.75	1.12	50°
LBOA-32	LBOA-32-S	2.000	2.0008/1.9992	860	4.000/3.980	3.195/3.177	0.103	3.0010/2.9990	1.00	2.16	50°



Footnotes:

- (1) Rating based upon 2 million inches of travel with the load forces being applied downward on the linear bearing, while in a horizontal application, and based upon 1060 steel shafting (Rockwell 60C). The actual load rating, and life, is dependent upon factors detailed on pages A-6 to A-11.
- (2) The bearing retainer is plastic when the internal -S seal option is selected.



Specifications: LBC & LBO Linear Bearings (self-aligning)

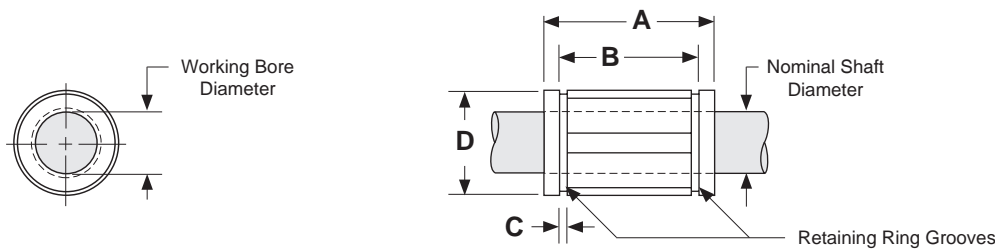
Operating Temperature	0° F to + 185° F				
Maximum Speed	9 ft/second				
Bearing Seals	Optional Internal Wiper Seals on both ends				
Matching Shaft	Class L (SL series), hardened & ground shafting (see pages C1 & C2)				
Housing Tolerances C = clearance P = preload	Nominal Shaft Diameter (inches)	Recommended Housing Bore		Bearing and Shaft Fit-up ⁽¹⁾ (before adjustment)	
		Fixed Housing (inches)	Adjustable Housing (inches)	Fixed Housing (inches)	Adjustable Housing (inches)
	0.250	.5005 / .5000	.5010 / .5000	.0015C / .0000	.002C / .0000
	0.375	.6255 / .6250	.6260 / .6250	.0015C / .0000	.002C / .0000
	0.500	.8755 / .8750	.8760 / .8750	.0015C / .0000	.002C / .0000
	0.625	1.1255 / 1.1250	1.1260 / 1.1250	.0015C / .0000	.002C / .0000
	0.750	1.2505 / 1.2500	1.2510 / 1.2500	.0015C / .0000	.002C / .0000
	1.000	1.5630 / 1.5625	1.5635 / 1.5625	.0015C / .0000	.002C / .0000
	1.250	2.0008 / 2.0000	2.0010 / 2.0000	.0018C / .0001P	.002C / .0000
	1.500	2.3760 / 2.3750	2.3760 / 2.3750	.0021C / .0000	.0021C / .0000
2.000	3.0010 / 3.0000	3.0010 / 3.0000	.0023C / .0002P	.0023C / .0002P	

Footnotes:

(1) Adjustable Housing Diameter (before adjustment) for LBO-20 is .002C/.0001P.

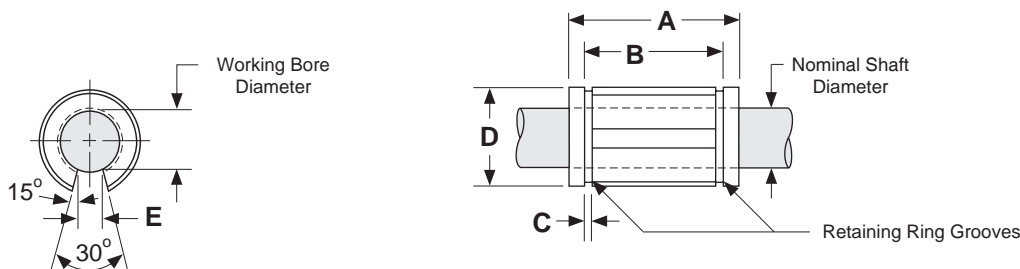
Dimensions & Specifications: **LBC** Linear Bearing Closed (self-aligning)

Model Number		Nominal Shaft Diameter (inches)	Dyn. ⁽¹⁾ Load Capacity (lbs)	Working Bore Diameter (inches)	Housing Bore ⁽²⁾ D (inches)	Dimensions (inches)			Bearing Weight (lbs)
Without Seals	With Seals					A	B	C	
LBC-4	LBC-4-S	0.250	60	0.2500/0.2495	0.5005/0.5000	0.750/0.735	0.511/0.501	0.039	0.01
LBC-6	LBC-6-S	0.375	105	0.3750/0.3745	0.6255/0.6250	0.875/0.860	0.699/0.689	0.039	0.02
LBC-8	LBC-8-S	0.500	265	0.5000/0.4995	0.8755/0.8750	1.250/1.230	1.032/1.012	0.050	0.04
LBC-10	LBC-10-S	0.625	420	0.6250/0.6245	1.1255/1.1250	1.500/1.480	1.105/1.095	0.056	0.10
LBC-12	LBC-12-S	0.750	640	0.7500/0.7495	1.2505/1.2500	1.625/1.605	1.270/1.250	0.056	0.14
LBC-16	LBC-16-S	1.000	1,045	1.0000/0.9995	1.5630/1.5625	2.250/2.230	1.884/1.864	0.068	0.25
LBC-20	LBC-20-S	1.250	1,585	1.2500/1.2494	2.0008/2.0000	2.625/2.600	2.004/1.984	0.068	0.45
LBC-24	LBC-24-S	1.500	1,930	1.5000/1.4994	2.3760/2.3750	3.000/2.970	2.410/2.390	0.086	0.85
LBC-32	not available	2.000	3,000	2.0000/1.9992	3.0010/3.0000	4.000/3.960	3.193/3.163	0.105	1.45



Dimensions & Specifications: **LBO** Linear Bearing Open (self-aligning)

Model Number		Nominal Shaft Diameter (inches)	Dyn. ⁽¹⁾ Load Capacity (lbs)	Working Bore Diameter (inches)	Housing Bore ⁽²⁾ D (inches)	Dimensions (inches)				Bearing Weight (lbs)
Without Seals	With Seals					A	B	C	E min.	
LBO-8	LBO-8-S	0.500	230	0.5000/0.4995	0.8755/0.8750	1.250/1.230	1.032/1.012	0.050	0.312	0.04
LBO-10	LBO-10-S	0.625	320	0.6250/0.6245	1.1255/1.1250	1.500/1.480	1.105/1.095	0.056	0.375	0.08
LBO-12	LBO-12-S	0.750	470	0.7500/0.7495	1.2505/1.2500	1.625/1.605	1.270/1.250	0.056	0.437	0.12
LBO-16	LBO-16-S	1.000	780	1.0000/0.9995	1.5630/1.5625	2.250/2.230	1.884/1.864	0.068	0.562	0.21
LBO-20	LBO-20-S	1.250	1,170	1.2500/1.2494	2.0008/2.0000	2.625/2.600	2.004/1.984	0.068	0.625	0.38
LBO-24	LBO-24-S	1.500	1,560	1.5000/1.4994	2.3760/2.3750	3.000/2.970	2.410/2.390	0.086	0.750	0.71
LBO-32	not available	2.000	2,350	2.0000/1.9992	3.0010/3.0000	4.000/3.960	3.193/3.163	0.105	1.000	1.20



Footnotes:

- (1) Rating based upon 2 million inches of travel with the load forces being applied downward on the linear bearing, while in a horizontal application, and based upon 1060 steel shafting (Rockwell 60C). The actual load rating, and life, is dependent upon factors detailed on pages A-6 to A-11.
- (2) This specification is based upon the bearing being on the shaft. Refer to B-3 for additional details.

SLBC - **10** - **CR** - **L**

Pillow Block Series

- SLBC** - One LBC bearing per pillow block
- DLBC** - Two LBC bearings per pillow block
- SLBO** - One LBO bearing per pillow block
- DLBO** - Two LBO bearings per pillow block

Nominal Diameter

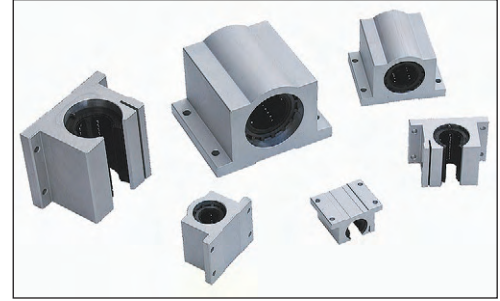
- 8** - 0.500 inch diameter
- 10** - 0.625 inch diameter
- 12** - 0.750 inch diameter
- 16** - 1.000 inch diameter
- 20** - 1.250 inch diameter
- 24** - 1.500 inch diameter
- 32** - 2.000 inch diameter (only in SLBC & SLBO style)

Bearing Options

- Standard
- CR** - Corrosion resistant

Bearing Lock

- None
- L** - Hand wheel lock

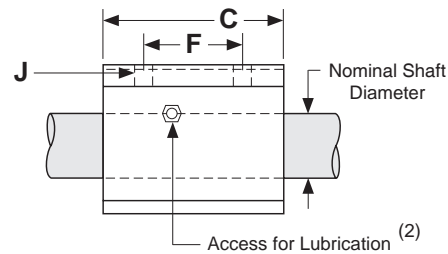
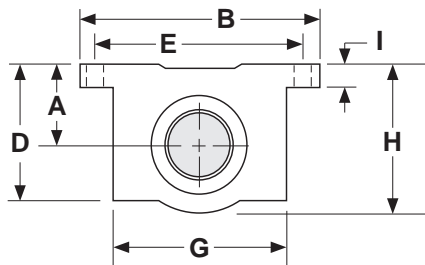


Specifications: SLBC, SLBO, DLBC & DLBO Pillow Blocks (self-aligning)

Bearing Housing Type & Finish	Aluminum 6061-T6 Pillow Block, Clear Anodized																	
Bearing Seals	Internal Wiper Seals on Both Ends																	
Operating Temperature	0° F to + 185° F																	
Maximum Speed	9 ft/second																	
Matching Shaft	Class L (SL series), hardened & ground shafting (see pages C1 & C2)																	
Diameter Tolerance	<table border="1"> <thead> <tr> <th>Nominal Shaft Diameter (inches)</th> <th>Shaft Diameter Tolerance (inches)</th> </tr> </thead> <tbody> <tr> <td>0.500</td> <td>.4995 / .4990</td> </tr> <tr> <td>0.625</td> <td>.6245 / .6240</td> </tr> <tr> <td>0.750</td> <td>.7495 / .7490</td> </tr> <tr> <td>1.000</td> <td>.9995 / .9990</td> </tr> <tr> <td>1.250</td> <td>1.2495 / 1.2490</td> </tr> <tr> <td>1.500</td> <td>1.4994 / 1.4989</td> </tr> <tr> <td>2.000</td> <td>1.9994 / 1.9987</td> </tr> </tbody> </table>	Nominal Shaft Diameter (inches)	Shaft Diameter Tolerance (inches)	0.500	.4995 / .4990	0.625	.6245 / .6240	0.750	.7495 / .7490	1.000	.9995 / .9990	1.250	1.2495 / 1.2490	1.500	1.4994 / 1.4989	2.000	1.9994 / 1.9987	
Nominal Shaft Diameter (inches)	Shaft Diameter Tolerance (inches)																	
0.500	.4995 / .4990																	
0.625	.6245 / .6240																	
0.750	.7495 / .7490																	
1.000	.9995 / .9990																	
1.250	1.2495 / 1.2490																	
1.500	1.4994 / 1.4989																	
2.000	1.9994 / 1.9987																	

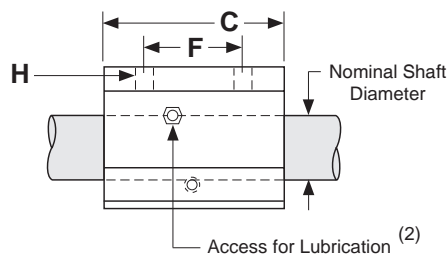
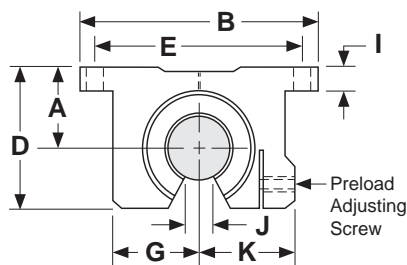
Dimensions & Specifications: **SLBC** Single Linear Bearing Closed Pillow Block (self-aligning)

Model Number	Nominal Shaft Diameter (inches)	Dyn. ⁽¹⁾ Load Capacity (lbs)	Dimensions (inches)										Block Weight (lbs)	
			A	B	C	D	E	F	G	H	I	J		
			+/- .003				+/- .010	+/- .010				hole		bolt
SLBC-8	0.500	265	0.687	2.00	1.69	1.13	1.688	1.000	1.38	1.25	.25	.16	# 6	0.20
SLBC-10	0.625	420	0.875	2.50	1.94	1.44	2.125	1.125	1.75	1.63	.28	.19	# 8	0.50
SLBC-12	0.750	640	0.937	2.75	2.06	1.56	2.375	1.250	1.88	1.75	.31	.19	# 8	0.60
SLBC-16	1.000	1,045	1.187	3.25	2.81	1.94	2.875	1.750	2.38	2.19	.38	.22	#10	1.20
SLBC-20	1.250	1,585	1.500	4.00	3.63	2.50	3.500	2.000	3.00	2.81	.44	.22	#10	2.50
SLBC-24	1.500	1,930	1.750	4.75	4.00	2.88	4.125	2.500	3.50	3.25	.50	.28	1/4	3.80
SLBC-32	2.000	3,000	2.125	6.00	5.00	3.63	5.250	3.250	4.50	4.06	.63	.41	3/8	7.00



Dimensions & Specifications: **SLBO** Single Linear Bearing Open Pillow Block (self-aligning)

Model Number	Nominal Shaft Diameter (inches)	Dyn. ⁽¹⁾ Load Capacity (lbs)	Dimensions (inches)											Block Weight (lbs)	
			A	B	C	D	E	F	G	H		I	J		K
			+/- .003				+/- .010	+/- .010		hole	bolt		min.		
SLBO-8	0.500	230	0.687	2.00	1.50	1.13	1.688	1.000	0.69	.16	# 6	.25	0.31	0.75	0.20
SLBO-10	0.625	320	0.875	2.50	1.75	1.44	2.125	1.125	0.88	.19	# 8	.28	0.37	0.94	0.40
SLBO-12	0.750	470	0.937	2.75	1.88	1.56	2.375	1.250	0.94	.19	# 8	.31	0.43	1.00	0.50
SLBO-16	1.000	780	1.187	3.25	2.63	2.00	2.875	1.750	1.19	.22	#10	.38	0.56	1.25	1.00
SLBO-20	1.250	1,170	1.500	4.00	3.38	2.56	3.500	2.000	1.50	.22	#10	.44	0.62	1.63	2.10
SLBO-24	1.500	1,560	1.750	4.75	3.75	2.94	4.125	2.500	1.75	.28	1/4	.50	0.75	1.88	3.20
SLBO-32	2.000	2,350	2.125	6.00	4.75	3.63	5.250	3.250	2.25	.41	3/8	.63	1.00	2.44	6.00

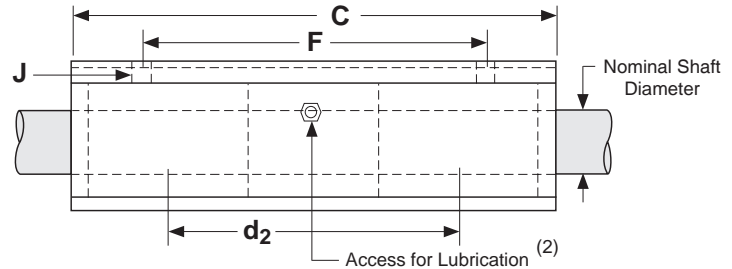
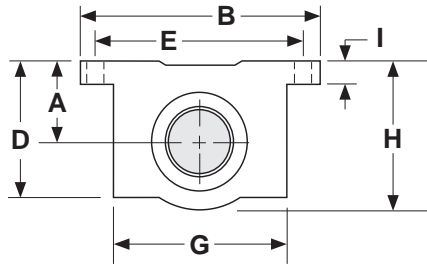


Footnotes:

- (1) Rating based upon 2 million inches of travel with the load forces being applied downward on the linear bearing, while in a horizontal application, and based upon 1060 steel shafting (Rockwell 60C). The actual load rating, and life, is dependent upon factors detailed on pages A-6 to A-11.
- (2) Size 0.500 has oil lubricant fitting. Sizes 0.625 and above have a 1/4-28 UNF straight thread access for lubrication.

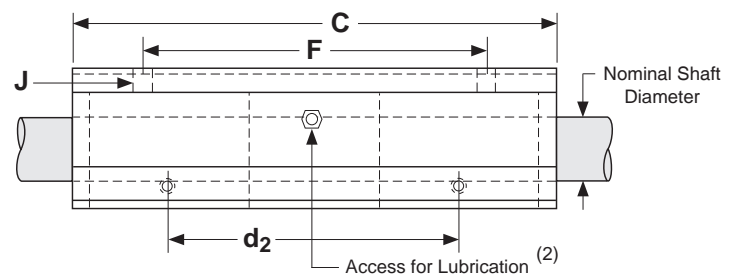
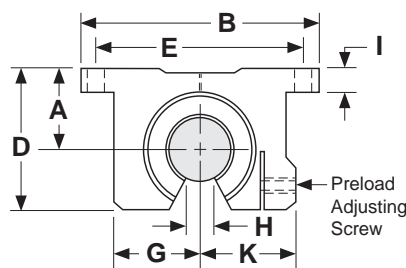
Dimensions & Specifications: **DLBC** Double Linear Bearing Closed Pillow Block (self-aligning)

Model Number	Nominal Shaft Diameter (inches)	Dyn. ⁽¹⁾ Load Capacity (lbs)	Dimensions (inches)												Block Weight (lbs)
			A +/- .003	B	C	D	E +/- .010	F +/- .010	G	H	I	J		d ₂ ⁽³⁾	
												hole	bolt		
DLBC-8	0.500	510	0.687	2.00	3.50	1.13	1.688	2.500	1.38	1.25	.25	.16	# 6	1.75	0.40
DLBC-10	0.625	900	0.875	2.50	4.00	1.44	2.125	3.000	1.75	1.63	.28	.19	# 8	2.00	1.00
DLBC-12	0.750	1,200	0.937	2.75	4.50	1.56	2.375	3.500	1.88	1.75	.31	.19	# 8	2.25	1.20
DLBC-16	1.000	2,100	1.187	3.25	6.00	1.94	2.875	4.500	2.38	2.19	.38	.22	#10	3.00	2.40
DLBC-20	1.250	3,000	1.500	4.00	7.50	2.50	3.500	5.500	3.00	2.81	.44	.22	#10	3.75	5.00
DLBC-24	1.500	4,000	1.750	4.75	9.00	2.88	4.125	6.500	3.50	3.25	.50	.28	1/4	4.50	7.80



Dimensions & Specifications: **DLBO** Double Linear Bearing Pillow Block Open (self-aligning)

Model Number	Nominal Shaft Diameter (inches)	Dyn. ⁽¹⁾ Load Capacity (lbs)	Dimensions (inches)														Block Weight (lbs)
			A +/- .003	B	C	D	E +/- .010	F +/- .010	G	H min.	I	J		K	d ₂ ⁽³⁾		
												hole	bolt				
DLBO-8	0.500	460	0.687	2.00	3.50	1.13	1.688	2.500	0.69	.31	.25	.16	# 6	0.75	1.75	0.40	
DLBO-10	0.625	640	0.875	2.50	4.00	1.44	2.125	3.000	0.88	.37	.28	.19	# 8	0.94	2.00	0.80	
DLBO-12	0.750	940	0.937	2.75	4.50	1.56	2.375	3.500	0.94	.43	.31	.19	# 8	1.00	2.25	1.00	
DLBO-16	1.000	1,560	1.187	3.25	6.00	2.00	2.875	4.500	1.19	.56	.38	.22	#10	1.25	3.00	2.00	
DLBO-20	1.250	2,340	1.500	4.00	7.50	2.56	3.500	5.500	1.50	.62	.44	.22	#10	1.63	3.75	4.20	
DLBO-24	1.500	3,120	1.750	4.75	9.00	2.94	4.125	6.500	1.75	.75	.50	.28	1/4	1.88	4.50	6.70	



Footnotes:

- (1) Rating based upon 2 million inches of travel with the load forces being applied downward on the linear bearing, while in a horizontal application, and based upon 1060 steel shafting (Rockwell 60C). The actual load rating, and life, is dependent upon factors detailed on pages A-6 to A-11.
- (2) Size 0.500 has oil lubricant fitting. Sizes 0.625 and above have a 1/4-28 UNF straight thread access for lubrication.
- (3) This value is the center to center distance (spacing) of the bearings on a single shaft (d₂).

TRCA - **12** - **12** - **CR** - **P** - **L1**

TWIN RAIL® Carriage Assembly series

TRCA - Plate with mounted SLBO or DLBO

Nominal Bearing Diameter

- 8** - 0.500 inch diameter
- 10** - 0.625 inch diameter
- 12** - 0.750 inch diameter
- 16** - 1.000 inch diameter
- 20** - 1.250 inch diameter
- 24** - 1.500 inch diameter
- 32** - 2.000 inch diameter

Carriage Plate Length

- 6** - 6 inches
- 8** - 8 inches
- 12** - 12 inches
- 18** - 18 inches
- 24** - 24 inches
- 30** - 30 inches

Bearing Options

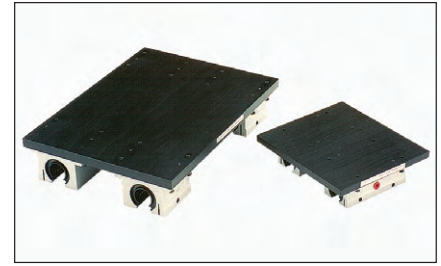
- Standard
- CR** - Corrosion resistant

Carriage Plate Mounting

- No Holes
- P** - Pre-Machined Mounting holes

Bearing Lock

- None
- Lx** - Hand wheel locks (x = number of locks - 1, 2, 3 or 4)



B

Specifications: **TRCA** TWIN RAIL® Carriage Assembly

Bearing Housing Type & Finish	Aluminum 6061-T6 Pillow Block, Clear Anodized	
Bearing Seals	Internal Wiper Seals on Both Ends	
Carriage Plate Type & Finish	Machined Aluminum 6061-T6 Plate, Black Anodized	
Bearing Alignment on Plate	+/- 0.001", Pillow Blocks Doweled to Carriage Plate	
Operating Temperature	0° F to + 185° F	
Maximum Speed	9 ft/second	
Matching Shaft Assembly	TRSA series (see page C-8)	
Diameter Tolerance	Nominal Shaft Diameter (inches)	Shaft Diameter Tolerance (inches)
	0.500	.4995 / .4990
	0.625	.6245 / .6240
	0.750	.7495 / .7490
	1.000	.9995 / .9990
	1.250	1.2495 / 1.2490
	1.500	1.4994 / 1.4989
	2.000	1.9994 / 1.9987

Specifications subject to change without notice

Dimensions & Specifications: TRCA TWIN RAIL® Carriage Assembly

Model Number	Nom. Shaft Dia. (inches)	Dyn. Load Cap. (lbs)	Dimensions (inches)													Assembly Weight (lbs)
			A +/- .005	B +/- .005	C	D	E	F	G	H	J	K	d _r ⁽²⁾	d ₁ ⁽³⁾	d ₂ ⁽⁴⁾	
TRCA8-6	0.500	920	6.00	5.50	1.25	0.75	0.68	1.12	2.00	.25	3.50	0.375	1.062	3.00	1.90	2.4
TRCA8-12	0.500	920	12.00	5.50	0.25	0.75	0.68	1.12	2.00	.25	11.50	0.375	1.062	3.00	10.00	4.6
TRCA8-18	0.500	920	18.00	5.50	0.25	0.75	0.68	1.12	2.00	.25	17.50	0.375	1.062	3.00	16.00	5.9
TRCA10-6	0.625	1,280	6.00	6.75	1.00	0.93	0.87	1.43	2.50	.25	4.00	0.375	1.250	3.75	2.15	3.5
TRCA10-12	0.625	1,280	12.00	6.75	0.25	0.93	0.87	1.43	2.50	.25	11.50	0.375	1.250	3.75	9.75	6.0
TRCA10-18	0.625	1,280	18.00	6.75	0.25	0.93	0.87	1.43	2.50	.25	17.50	0.375	1.250	3.75	15.75	7.7
TRCA12-6	0.750	1,880	6.00	7.75	0.75	1.00	0.93	1.56	2.75	.25	4.50	0.500	1.437	4.50	2.50	4.8
TRCA12-12	0.750	1,880	12.00	7.75	0.25	1.00	0.93	1.56	2.75	.25	11.49	0.500	1.437	4.50	9.62	8.2
TRCA12-18	0.750	1,880	18.00	7.75	0.25	1.00	0.93	1.56	2.75	.25	17.49	0.500	1.437	4.50	15.62	10.7
TRCA16-6	1.000	3,120	6.00	9.00	0.00	1.25	1.18	2.00	3.25	.25	6.00	0.500	1.687	5.25	3.25	7.2
TRCA16-12	1.000	3,120	12.00	9.00	0.25	1.25	1.18	2.00	3.25	.25	11.49	0.500	1.687	5.25	8.87	11.0
TRCA16-18	1.000	3,120	18.00	9.00	0.25	1.25	1.18	2.00	3.25	.25	17.49	0.500	1.687	5.25	14.87	14.0
TRCA16-24	1.000	3,120	24.00	9.00	0.25	1.25	1.18	2.00	3.25	.25	23.49	0.500	1.687	5.25	20.87	16.9
TRCA20-8	1.250	4,680	8.00	10.50	0.25	1.62	1.50	2.56	4.00	.25	7.50	0.750	2.250	6.00	3.90	16.0
TRCA20-12	1.250	4,680	12.00	10.50	0.25	1.62	1.50	2.56	4.00	.25	11.49	0.750	2.250	6.00	8.12	16.4
TRCA20-18	1.250	4,680	18.00	10.50	0.25	1.62	1.50	2.56	4.00	.25	17.49	0.750	2.250	6.00	14.12	21.6
TRCA20-24	1.250	4,680	24.00	10.50	0.25	1.62	1.50	2.56	4.00	.25	23.49	0.750	2.250	6.00	20.12	26.8
TRCA24-12	1.500	6,240	12.00	12.00	1.50	1.87	1.75	2.93	4.75	.31	9.00	1.000	2.750	6.62	5.00	30.0
TRCA24-18	1.500	6,240	18.00	12.00	0.25	1.87	1.75	2.93	4.75	.31	17.50	1.000	2.750	6.62	13.75	40.2
TRCA24-24	1.500	6,240	24.00	12.00	0.25	1.87	1.75	2.93	4.75	.31	23.50	1.000	2.750	6.62	19.75	48.1
TRCA24-30	1.500	6,240	30.00	12.00	0.25	1.87	1.75	2.93	4.75	.31	29.50	1.000	2.750	6.62	25.75	56.0
TRCA32-18	2.000	9,400	18.00	14.00	0.25	2.43	2.25	3.62	6.00	.37	17.50	1.250	3.375	7.25	12.75	61.7
TRCA32-24	2.000	9,400	24.00	14.00	0.25	2.43	2.25	3.62	6.00	.37	23.50	1.250	3.375	7.25	18.75	73.2
TRCA32-30	2.000	9,400	30.00	14.00	0.25	2.43	2.25	3.62	6.00	.37	29.50	1.250	3.375	7.25	24.75	84.8

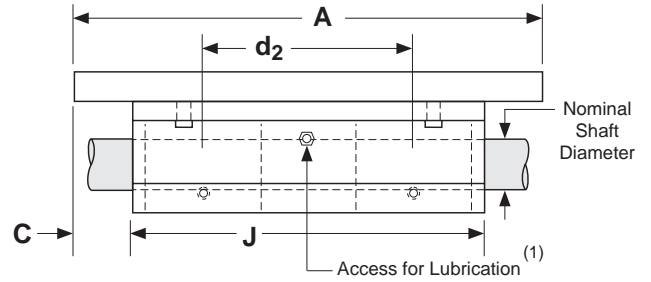
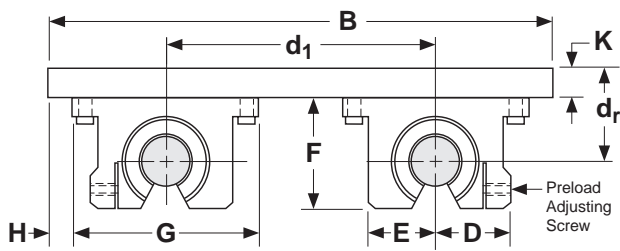
Footnotes:

- (1) Rating based upon 2 million inches of travel with the load forces being applied downward on the linear bearing, while in a horizontal application, and based upon 1060 steel shafting (Rockwell 60C). The actual load rating, and life, is dependent upon factors detailed on pages A-6 to A-11.
- (2) This value is the center distance of the bearing to the top of the carriage plate surface (d_r).
- (3) This value is the center to center distance (spread) between the rails (d₁).
- (4) This value is the center to center distance (spacing) of the bearings on a single shaft (d₂).

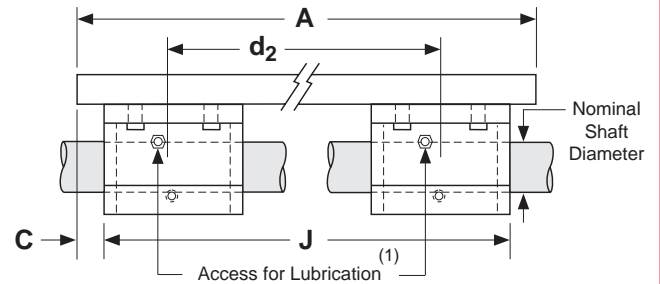
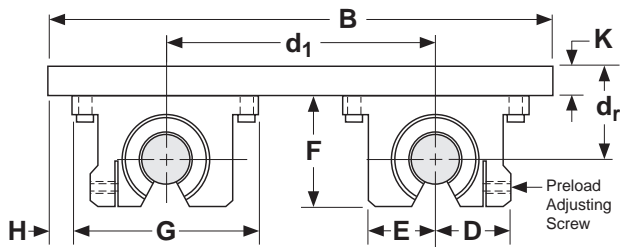
Dimensions

(inches)

Available For:
 TRCA8-6, TRCA10-6, TRCA12-6,
 TRCA16-6, TRCA20-8, TRCA24-12



Available For:
 All other TRCA models,
 not shown above



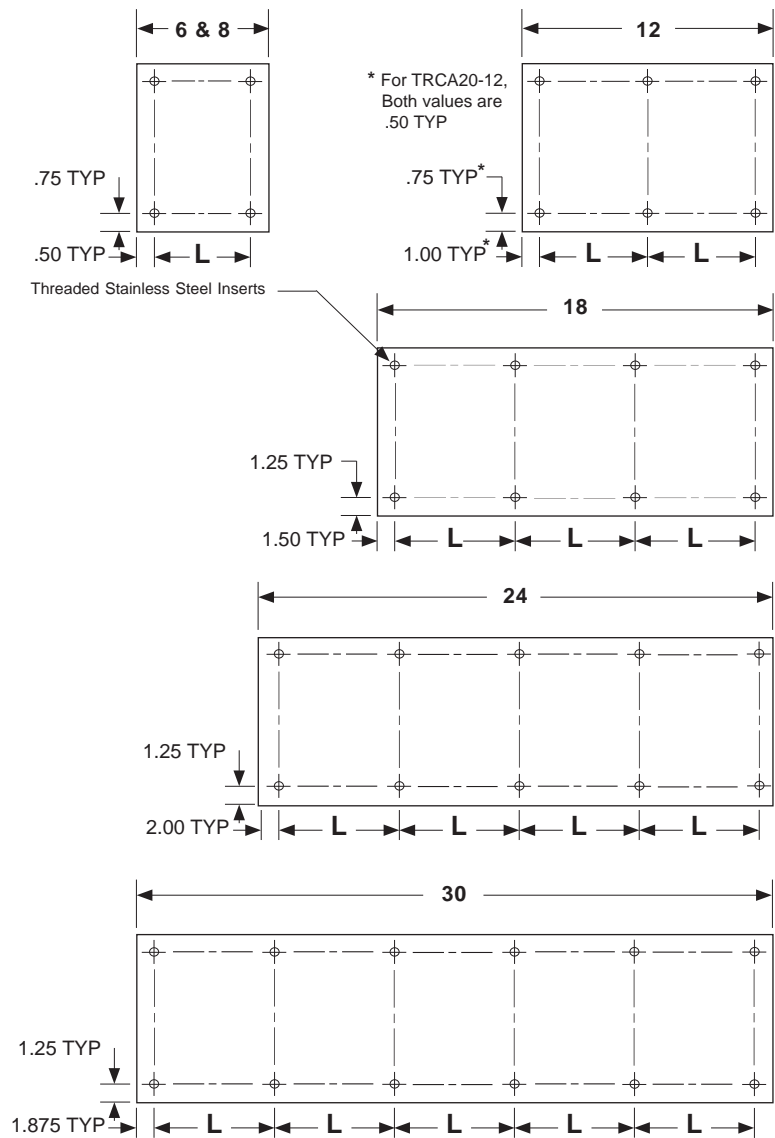
Footnotes:

(1) Size 0.500 has oil lubricant fitting. Sizes 0.625 and above have a 1/4-28 UNF straight thread access for lubrication.

(-P) Pre-Machined Carriage Mounting Holes

All carriage assembly plates are available with a pre-determined number & location of mounting holes. These holes consist of stainless steel threaded inserts per the below chart. Custom mounting patterns are available upon request.

Model Number	Carriage Length (inches)	L (inches)	Threaded Insert Size
TRCA8-6-P	6.00	5.00	#10-32
TRCA8-12-P	12.00	5.00	#10-32
TRCA8-18-P	18.00	5.00	#10-32
TRCA10-6-P	6.00	5.00	#10-32
TRCA10-12-P	12.00	5.00	#10-32
TRCA10-18-P	18.00	5.50	#10-32
TRCA12-6-P	6.00	5.00	1/4-28
TRCA12-12-P	12.00	5.00	1/4-28
TRCA12-18-P	18.00	5.50	1/4-28
TRCA16-6-P	6.00	5.00	5/16-24
TRCA16-12-P	12.00	5.00	5/16-24
TRCA16-18-P	18.00	5.00 </td <td>5/16-24</td>	5/16-24
TRCA16-24-P	24.00	5.00	5/16-24
TRCA20-8-P	8.00	7.00	3/8-24
TRCA20-12-P	12.00	5.00	3/8-24
TRCA20-18-P	18.00	5.00	3/8-24
TRCA20-24-P	24.00	5.00	3/8-24
TRCA24-12-P	12.00	5.00	3/8-24
TRCA24-18-P	18.00	5.00	3/8-24
TRCA24-24-P	24.00	5.00	3/8-24
TRCA24-30-P	30.00	5.25	3/8-24
TRCA32-18-P	18.00	5.00	1/2-20
TRCA32-24-P	24.00	5.00	1/2-20
TRCA32-30-P	30.00	5.25	1/2-20

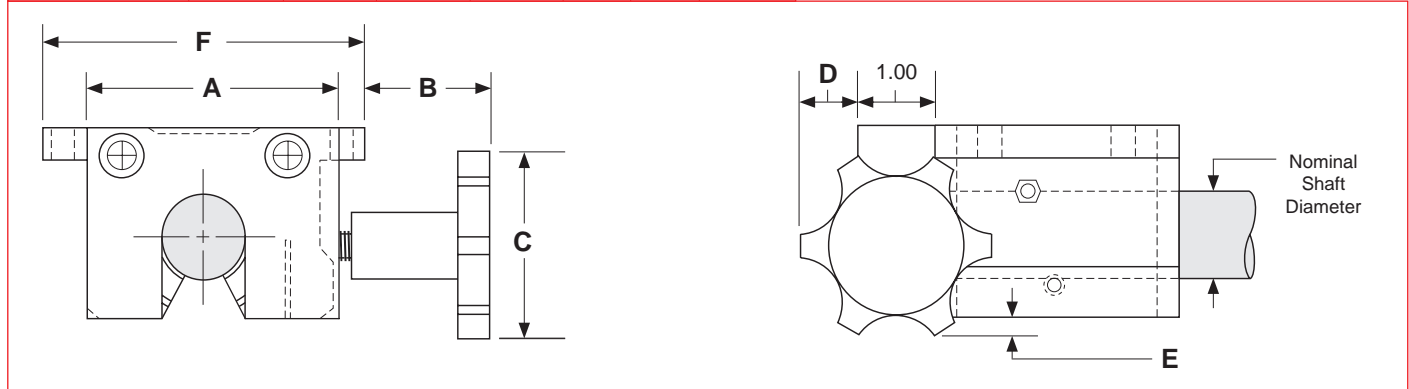


Options

(-L) Hand Wheel Lock

This option adds an aluminum clamping block to the end of a pillow block, which then provides for a manual lock of the bearing to the shaft. The threaded hand wheel shaft presses into a bronze insert which makes contact to provide a "pressure lock" to the shaft. The threaded steel screw will not back drive and does not make physical contact with the steel shaft (no steel to steel contact). The lock will be installed as shown below when ordered with a SLBC, SLBO, DLBC, DLBO, or TRCA series. Multiple locks can be installed onto a TRCA assembly.

Nominal Shaft Diameter (inches)	Dimensions (inches)						
	A	B	C	D	E		F
					open	closed	
8 - 0.500	1.680	1.72	2.00	0.50	.56	.44	2.00
10 - 0.625	1.875	1.53	2.00	0.50	.50	.31	2.50
12 - 0.750	2.067	1.46	2.00	0.50	.37	.18	2.75
16 - 1.000	2.312	1.34	2.00	0.50	.19	---	3.25
20 - 1.250	3.125	1.66	2.50	0.75	.17	---	4.00
24 - 1.500	3.625	1.46	2.50	0.75	.05	---	4.75
32 - 2.000	4.600	1.45	2.50	0.75	---	---	6.00



Custom Carriage Sizes

Custom carriage sizes that need to be wider, or longer than shown in this catalog can be provided upon request. This will allow for larger rail and bearing spacing (d_1 & d_2 dimensions).

Custom Carriage Material & Finishes

The standard carriage material is aluminum with a black anodized finish. Aluminum plates can be finished in many different colors, while steel carriage plates can be provided with a black oxide finish. Many other custom alternatives for carriage plates are available.

Special Grease Options

Bearings can be supplied with special greases, or lubricants, in order to meet the environmental requirements of the application. Examples of operating environments which may require a special lubricant include: high or low temperature, clean rooms, vacuums and food grade applications.

Specifications subject to change without notice

LBCM Series

Self-Aligning Closed



LBOM Series

Self-Aligning Open



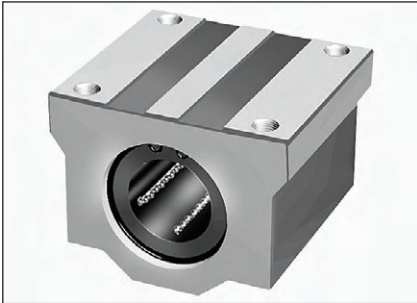
SLBCM-A Series

Single Self-Aligning Closed Adjustable



SLBCM Series

Single Self-Aligning Closed



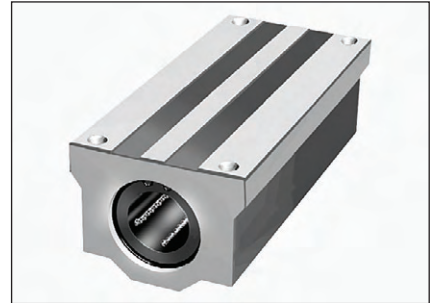
SLBOM Series

Single Self-Aligning Open



DLBCM Series

Double Self-Aligning Closed



LBCME Series

Self-Aligning Closed



LBOME Series

Self-Aligning Open



DLBCME-A Series

Single Self-Aligning Closed Adjustable



SLBCME Series

Single Self-Aligning Closed



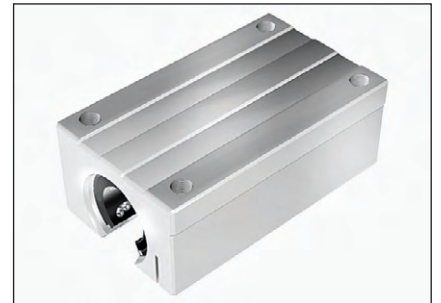
SLBOME Series

Single Self-Aligning Open



DLBOME-A Series

Double Self-Aligning Open Adjustable



SLBCME-A Series

Single Self-Aligning Closed Adjustable



SLBOME-A Series

Single Self-Aligning Open Adjustable



DLBCME Series

Double Self-Aligning Closed



DLBOME Series

Double Self-Aligning Open



B

