

20 **06** **06** - **WC1** - **1** - **S013** - **M02** - **C165** - **L01** - **E00** - **B00**

Table Series

Carriage Length

06 - 6 inches **12** - 12 inches

Travel Length (see pages H-6 & H-8)

06 - 6 to 55 inches

Waycovers

WC0 - with no waycovers **WC1** - with waycovers

Carriage Inserts (see pages H-7 & H-9)

1 - English mount **2** - Metric mount

Screw Options (see pages H-18 to H-21)

Rolled ball screws

S013 - .750 x .200 NPL
S014 - .750 x .200 PL
S015 - .750 x .200 NPL(T)
S016 - .750 x .200 PL(T)
S017 - .750 x .500 NPL
S018 - .750 x .500 PL
S019 - .750 x .500 NPL(T)
S020 - .750 x .500 PL(T)

Precision ball screws

S122 - .750 x .200 NPL
S123 - .750 x .200 PL
S124 - 20 x 5 NPL
S125 - 20 x 5 PL
S128 - 20 x 20 NPL
S129 - 20 x 20 PL

Ground ball screws

S216 - .750 x .200 PL
S217 - .750 x .500 PL
S221 - 20 x 5 PL
S222 - 20 x 20 PL

Rolled acme screws

S306 - .750 x .100 NPL
S307 - .750 x .100 PL
S308 - .750 x .200 NPL
S309 - .750 x .200 PL

S999 - other

Motor Mount (see pages H-7 & H-9, H-24 to H-25)

M00 - none

M01 - hand crank

M99 - other

M02 - NEMA 23 mount (E)

M03 - NEMA 23 mount (M)

M04 - NEMA 34 mount (E)

M05 - NEMA 34 mount (M)

M08 - NEMA 34 (RH) wrap

M09 - NEMA 34 (LH) wrap

M10 - NEMA 42 mount (E)

M11 - NEMA 42 mount (M)

M12 - NEMA 42 (RH) wrap

M13 - NEMA 42 (LH) wrap

Coupling Options (see pages H-22 to H-23)

C000 - none

C999 - other

C056 to C063 - C125

C084 to C090 - C150

C165 to C174 - H131

C201 to C211 - H163

C445 to C454 - G126

C481 to C491 - G158

Limit & Home Switches (see pages H-15 to H-17)

L00 - no switches

L99 - other

EOT & home switches

EOT switches only

home switch only

Mechanical

L01

L02

L03

Reed

L04

L05

L06

Hall

L07

L08

L09

Prox (NPN)

L10

L11

L12

Prox (PNP)

L13

L14

L15

Encoder Options (see page H-27)

E00 - none

E01 - rotary (500 lines/rev)

E02 - rotary (1000 lines/rev)

E03 - rotary (1270 lines/rev)

E10 - linear (2500 lines/inch)

E11 - linear (125 lines/mm)

E99 - other

Power-off Brakes (see page H-26)

B00 - none

B03 - 24 VDC

B04 - 90 VDC

B99 - other

(E) - English Interface
 (LH) - Left Hand
 (M) - Metric Interface

(NPL) - Non Preloaded
 (PL) - Preloaded
 (RH) - Right Hand
 (T) - Turcite Nut

Specifications

| Load Capacities | | 6 inch (2 bearing) Carriage | | 12 inch (4 bearing) Carriage | |
|--|--|-----------------------------|----------------------------|------------------------------|-----------------------------|
| Dynamic Horizontal | 2 million inches (50 km) of travel | 4,400 lbs | (1996 kg) | 8,800 lbs | (3992 kg) |
| Dynamic Horizontal | 100 million inches (2540 km) of travel | 1,180 lbs | (535 kg) | 2,360 lbs | (1070 kg) |
| Static Horizontal | | 7,600 lbs | (3447 kg) | 15,200 lbs | (6895 kg) |
| Dynamic Roll Moment | 2 million inches (50 km) of travel | 790 ft-lbs | (1071 N-m) | 1,580 ft-lbs | (2142 N-m) |
| Dynamic Roll Moment | 100 million inches (2540 km) of travel | 210 ft-lbs | (285 N-m) | 425 ft-lbs | (576 N-m) |
| Static Roll Moment | | 1,365 ft-lbs | (1851 N-m) | 2,730 ft-lbs | (3701 N-m) |
| Dyn. Pitch & Yaw Moment | 2 million inches (50 km) of travel | 175 ft-lbs | (237 N-m) | 2,485 ft-lbs | (3369 N-m) |
| Dyn. Pitch & Yaw Moment | 100 million inches (2540 km) of travel | 47 ft-lbs | (64 N-m) | 670 ft-lbs | (908 N-m) |
| Static Pitch & Yaw Moment | | 300 ft-lbs | (407 N-m) | 4,300 ft-lbs | (5830 N-m) |
| Each Bearing Dyn. Capacity | 2 million inches (50 km) of travel | 2,200 lbs | (998 kg) | 2,200 lbs | (998 kg) |
| Each Bearing Dyn. Capacity | 100 million inches (2540 km) of travel | 590 lbs | (265 kg) | 590 lbs | (265 kg) |
| Each Bearing Static Load Capacity | | 3,800 lbs | (1724 kg) | 3,800 lbs | (1724 kg) |
| Thrust Force Capacity | 10 million screw revolutions | 1,050 lbs | (476 kg) | 1,050 lbs | (476 kg) |
| Thrust Force Capacity | 500 million screw revolutions | 270 lbs | (122 kg) | 270 lbs | (122 kg) |
| Maximum Acceleration | | 386 in/sec ² | (9,8 m/sec ²) | 772 in/sec ² | (19,6 m/sec ²) |
| d₁ | Center to center distance (spread) between the two rails | 5.280 in | (134,1 mm) | 5.280 in | (134,1 mm) |
| d₂ | Center to center distance (spacing) of the bearings on a single rail | | - | 7.870 in | (199,9 mm) |
| d_r | Center distance of the bearing to top of carriage plate surface | 1.900 in | (48,3 mm) | 1.900 in | (48,3 mm) |

| Other | For 6 inch (2 bearing) & 12 inch (4 bearing) Carriages |
|--|---|
| Table Material | Base, Carriage, End Plates, & Cover Plate option - 6061 anodized aluminum |
| Linear Rail Material | Case Hardened Steel |
| Screw Material (see pages H-18 to H-21) | Acme Screw - Stainless Steel |
| Screw Material (see pages H-18 to H-21) | Rolled Ball, Precision Ball, & Ground Ball - Case Hardened Steel |
| Straightness | < 0.00004 in/in (< 1,02 microns/25mm) |
| Flatness | < 0.00004 in/in (< 1,02 microns/25mm) |
| Orthogonality (multi-axis systems) | < 15 arc-seconds |
| Friction Coefficient | < 0.01 |
| Motor Mount | NEMA 23 & 34 Mounts, Metric Mounts, Motor Wraps, and Hand Crank Option |
| Coupling | Three (3) different styles available |
| Waycover Material | Hypilon Polyester Bellows firmly mounted to carriage & end plates |

Dimensions & Specifications

- Without Waycovers -

| Model Number | Travel Length inches (mm) | Table Dimensions inches (mm) | | Mounting Dimensions inches (mm) | | | Screw Length inches (mm) | Table ⁽¹⁾ Weight lbs (kg) |
|-------------------|---------------------------------|------------------------------------|-------------------|---------------------------------------|----|----|--------------------------------|---|
| | | A | B | C | D | M | | |
| 200607-WC0 | 7 (175) | 14.75 (374,6) | 17.25 (438,1) | 2.120 (53,8) | 3 | 8 | 16.37 (416) | 38.3 (17,4) |
| 200614-WC0 | 14 (355) | 21.62 (549,1) | 24.12 (612,6) | 2.060 (52,3) | 5 | 12 | 23.24 (590) | 47.4 (21,5) |
| 200621-WC0 | 21 (530) | 28.50 (723,9) | 31.00 (787,4) | 2.000 (50,8) | 7 | 16 | 30.12 (765) | 56.5 (25,6) |
| 200628-WC0 | 28 (710) | 35.25 (895,3) | 37.75 (958,8) | 1.870 (47,5) | 9 | 20 | 36.87 (936) | 65.6 (29,8) |
| 200635-WC0 | 35 (885) | 42.25 (1073,1) | 44.75 (1136,6) | 1.870 (47,5) | 11 | 24 | 43.87 (1114) | 74.7 (33,9) |
| 200641-WC0 | 41 (1040) | 49.00 (1244,6) | 51.50 (1308,1) | 1.750 (44,4) | 13 | 28 | 50.62 (1286) | 83.8 (38,0) |
| 200655-WC0 | 55 (1395) | 62.75 (1593,8) | 65.25 (1657,3) | 1.620 (41,1) | 17 | 36 | 64.37 (1635) | 100.0 (45,4) |
| 201207-WC0 | 7 (175) | 20.75 (527,0) | 23.25 (590,5) | 1.620 (41,1) | 5 | 12 | 22.37 (568) | 54.3 (24,6) |
| 201214-WC0 | 14 (355) | 27.62 (701,5) | 30.12 (765,0) | 1.560 (39,6) | 7 | 16 | 29.24 (743) | 63.4 (28,8) |
| 201221-WC0 | 21 (530) | 34.50 (876,3) | 37.00 (939,8) | 1.500 (38,1) | 9 | 20 | 36.12 (917) | 72.5 (32,9) |
| 201228-WC0 | 28 (710) | 41.25 (1047,7) | 43.75 (1111,2) | 1.370 (34,8) | 11 | 24 | 42.87 (1089) | 81.6 (37,0) |
| 201235-WC0 | 35 (885) | 48.25 (1225,5) | 50.75 (1289,0) | 1.370 (34,8) | 13 | 28 | 49.87 (1267) | 90.7 (41,1) |
| 201241-WC0 | 41 (1040) | 55.00 (1397,0) | 57.50 (1460,5) | 1.250 (31,7) | 15 | 32 | 56.62 (1438) | 99.8 (45,3) |
| 201255-WC0 | 55 (1395) | 68.75 (1746,2) | 71.25 (1809,7) | 1.120 (28,4) | 19 | 40 | 70.37 (1787) | 117.0 (53,1) |

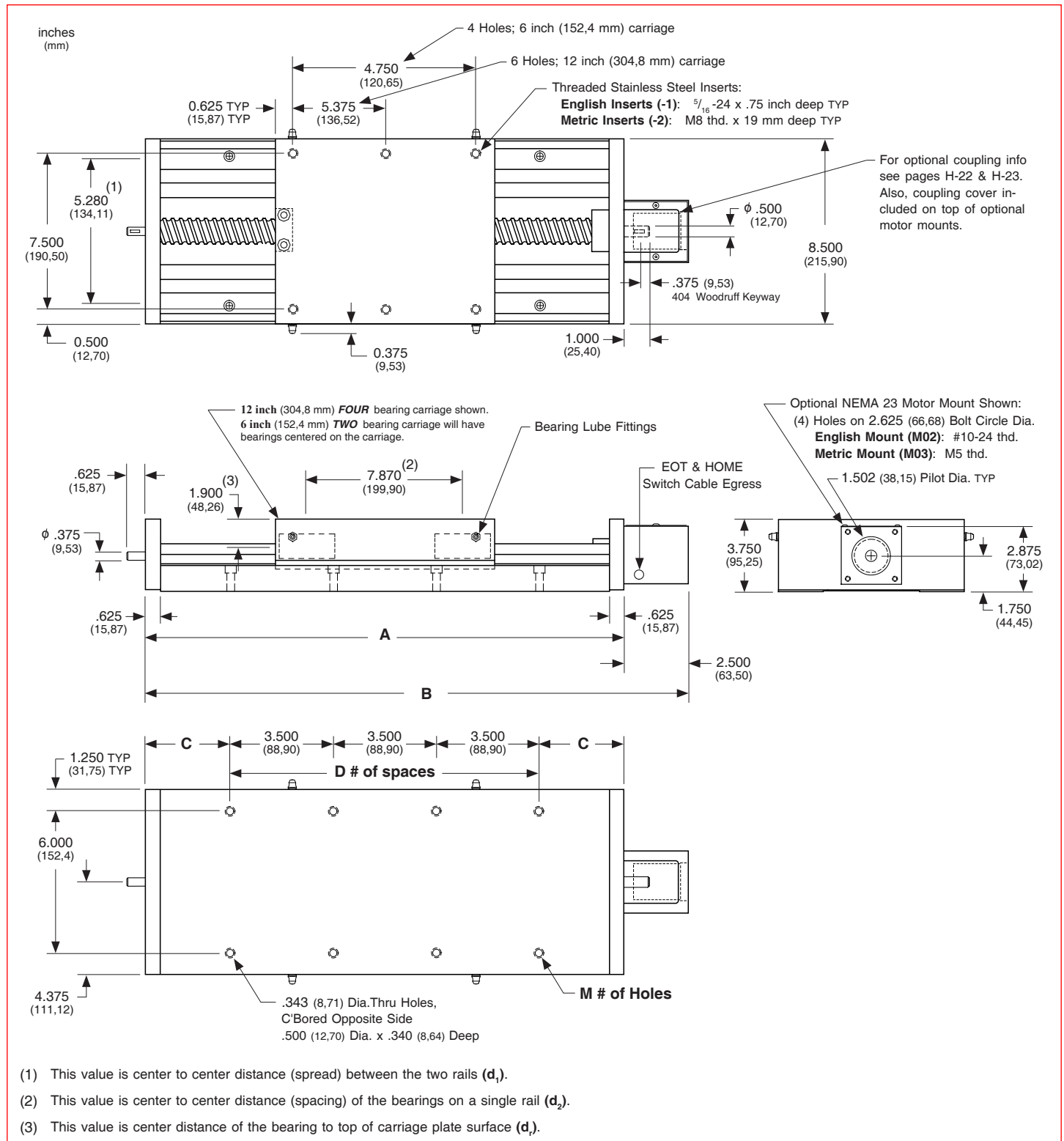
- └ 06 = 6 inch (152,4 mm) carriage length; 2 bearings; carriage weight = 11.0 lbs. (4,99 kg)
- └ 12 = 12 inch (304,8 mm) carriage length; 4 bearings; carriage weight = 19.0 lbs. (8,62 kg)

Footnotes:

(1) Weight shown is with a 0.750 inch (20 mm) diameter screw, a NEMA 23 motor mount [0.34 lbs (0,16 kg)], and a C125 style [0.22 lbs (0,10 kg)] coupling.

Dimensions

- Without Waycovers -



Note: Any 200 series table can be mounted on top of any second 200 series, in order to create X-Y multiple axis configurations. The carriage's threaded stainless steel insert hole pattern DOES NOT exactly match the base mounting hole pattern on each table, therefore machining of the bottom axis carriage plate is required. Contact *LINTECH*.

Dimensions & Specifications

- With Waycovers -

| Model Number | Travel Length inches (mm) | Table Dimensions inches (mm) | | Mounting Dimensions inches (mm) | | | Screw Length inches (mm) | Table ⁽¹⁾ Weight lbs (kg) |
|-------------------|---------------------------------|------------------------------------|-------------------|---------------------------------------|----|----|--------------------------------|---|
| | | A | B | C | D | M | | |
| 200606-WC1 | 6 (150) | 14.75 (374,6) | 17.25 (438,1) | 2.120 (53,8) | 3 | 8 | 16.37 (416) | 40.0 (18,1) |
| 200612-WC1 | 12 (300) | 21.62 (549,1) | 24.12 (612,6) | 2.060 (52,3) | 5 | 12 | 23.24 (590) | 50.0 (22,7) |
| 200618-WC1 | 18 (455) | 28.50 (723,9) | 31.00 (787,4) | 2.000 (50,8) | 7 | 16 | 30.12 (765) | 60.0 (27,2) |
| 200624-WC1 | 24 (605) | 35.25 (895,3) | 37.75 (958,8) | 1.870 (47,5) | 9 | 20 | 36.87 (936) | 70.0 (31,8) |
| 200630-WC1 | 30 (760) | 42.25 (1073,1) | 44.75 (1136,6) | 1.870 (47,5) | 11 | 24 | 43.87 (1114) | 80.0 (36,3) |
| 200636-WC1 | 36 (910) | 49.00 (1244,6) | 51.50 (1308,1) | 1.750 (44,4) | 13 | 28 | 50.62 (1286) | 90.0 (40,8) |
| 200648-WC1 | 48 (1215) | 62.75 (1593,8) | 65.25 (1657,3) | 1.620 (41,1) | 17 | 36 | 64.37 (1635) | 108.0 (49,0) |
| 201206-WC1 | 6 (150) | 20.75 (527,0) | 23.25 (590,5) | 1.620 (41,1) | 5 | 12 | 22.37 (568) | 56.0 (25,4) |
| 201212-WC1 | 12 (300) | 27.62 (701,5) | 30.12 (765,0) | 1.560 (39,6) | 7 | 16 | 29.24 (743) | 66.0 (29,9) |
| 201218-WC1 | 18 (455) | 34.50 (876,3) | 37.00 (939,8) | 1.500 (38,1) | 9 | 20 | 36.12 (917) | 76.0 (34,5) |
| 201224-WC1 | 24 (605) | 41.25 (1047,7) | 43.75 (1111,2) | 1.370 (34,8) | 11 | 24 | 42.87 (1089) | 86.0 (39,0) |
| 201230-WC1 | 30 (760) | 48.25 (1225,5) | 50.75 (1289,0) | 1.370 (34,8) | 13 | 28 | 49.87 (1267) | 96.0 (43,6) |
| 201236-WC1 | 36 (910) | 55.00 (1397,0) | 57.50 (1460,5) | 1.250 (31,7) | 15 | 32 | 56.62 (1438) | 106.0 (48,1) |
| 201248-WC1 | 48 (1215) | 68.75 (1746,2) | 71.25 (1809,7) | 1.120 (28,4) | 19 | 40 | 70.37 (1787) | 125.0 (56,7) |

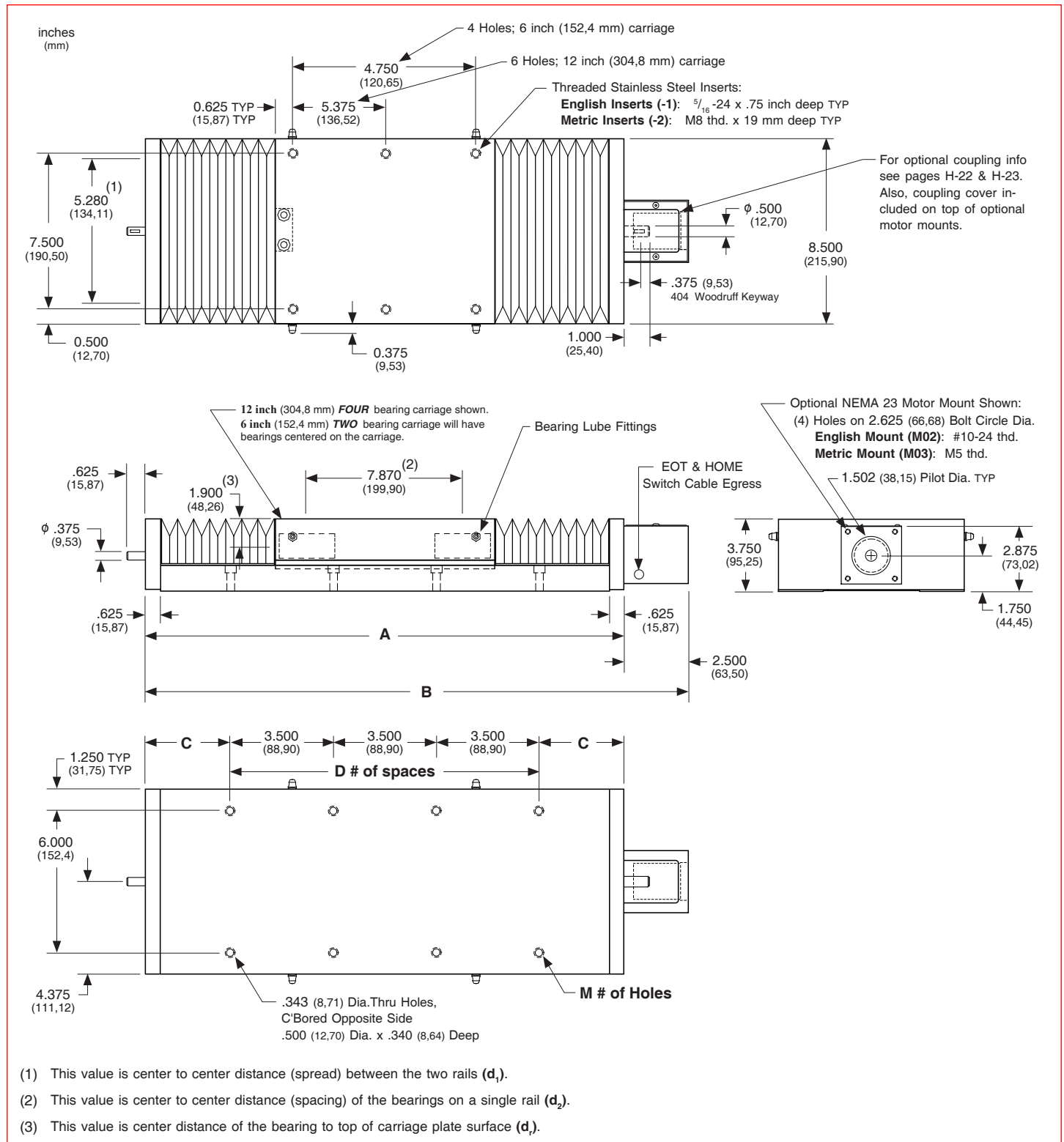
- └ 06 = 6 inch (152,4 mm) carriage length; 2 bearings; carriage weight = 11.0 lbs. (4,99 kg)
- └ 12 = 12 inch (304,8 mm) carriage length; 4 bearings; carriage weight = 19.0 lbs. (8,62 kg)

Footnotes:

(1) Weight shown is with a 0.750 inch (20 mm) diameter screw, a NEMA 23 motor mount [0.34 lbs (0,16 kg)], and a C125 style [0.22 lbs (0,10 kg)] coupling.

Dimensions

- With Waycovers -



Note: Any 200 series table can be mounted on top of any second 200 series, in order to create X-Y multiple axis configurations. The carriage's threaded stainless steel insert hole pattern DOES NOT exactly match the base mounting hole pattern on each table, therefore machining of the bottom axis carriage plate is required. Contact *LINTECH*.