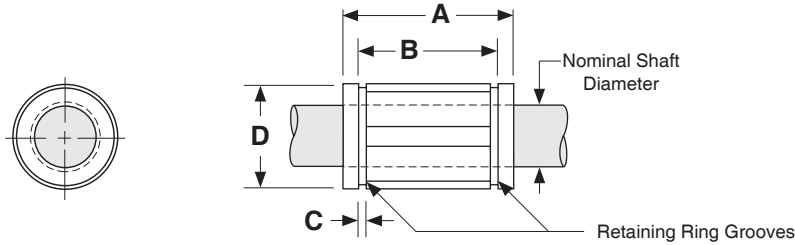


## Dimensions & Specifications: **LBCM** Linear Bushing Closed Metric (Asian Style)

Model Number		Nominal Shaft Diameter (mm)	Dynamic Load Capacity (N)	Housing Bore D (mm)	Dimensions (mm)			# of Ball Circuits	Bearing Weight (g)
Without Seals	With Seals				A	B	C		
LBCM-16	-S	16	1225	28	37	26,5	1,60	5	34
LBCM-20	-S	20	2303	32	42	30,5	1,60	6	58
LBCM-25	-S	25	4312	40	59	41,0	1,85	6	120
LBCM-30	-S	30	4802	45	64	44,5	1,85	6	148
LBCM-40	-S	40	9310	60	80	60,5	2,10	6	314



### Footnotes:

- (1) Rating based upon 50 km of travel with the load forces being applied downward on the linear bearing, while in a horizontal application, and based upon 1060 steel shafting (Rockwell 60C).
- (2) This specification is based upon the bearing being on the shaft.