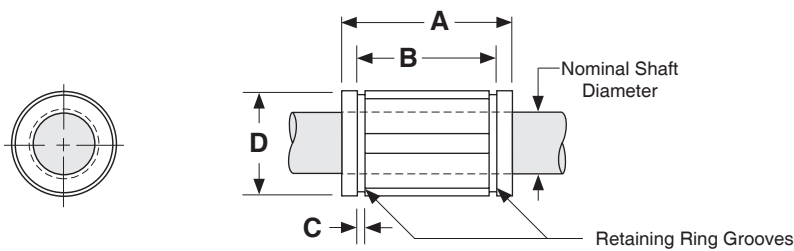


Dimensions & Specifications: **LBCME** Linear Bushing Closed Metric (European Style)

Model Number		Nominal Shaft Diameter (mm)	Dynamic Load Capacity (N)	Housing Bore D (mm)	Dimensions (mm)			# of Ball Circuits	Bearing Weight (g)
Without Seals	With Seals				A	B	C		
LBCME- 8	-S	8	423	16	25	16,5	1,10	4	7.3
LBCME-10	-S	10	750	19	29	22,0	1,30	5	14
LBCME-12	-S	12	1020	22	32	22,9	1,30	5	21
LBCME-16	-S	16	1250	26	36	24,9	1,30	5	43
LBCME-20	-S	20	2090	32	45	31,5	1,60	6	58
LBCME-25	-S	25	3780	40	58	44,1	1,85	6	123
LBCME-30	-S	30	5470	47	68	52,1	1,85	6	216
LBCME-40	-S	40	6590	62	80	60,6	2,15	6	333
LBCME-50	-S	50	10800	75	100	77,6	2,65	6	618



Footnotes:

- (1) Rating based upon 50 km of travel with the load forces being applied downward on the linear bearing, while in a horizontal application, and based upon 1060 steel shafting (Rockwell 60C).
- (2) This specification is based upon the bearing being on the shaft.