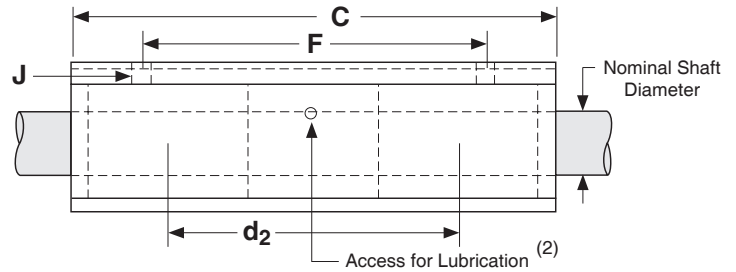
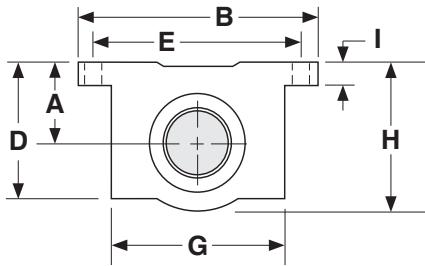


## Dimensions & Specifications: **DLBCH** Double Linear Bearing Closed Pillow Block (self-aligning)

Model Number	Nominal Shaft Diameter (inches)	Dyn. Load Capacity <sup>(1)</sup> (lbs)	Dimensions (inches)											Block Weight (lbs)	
			A	B	C	D	E	F	G	H	I	J			d <sub>2</sub> <sup>(3)</sup>
			+/- .003				+/- .010	+/- .010				hole	bolt		
<b>DLBCH-12</b>	0.750	2,260	0.937	2.75	4.50	1.56	2.375	3.500	1.88	1.75	.31	.19	# 8	2.25	1.20
<b>DLBCH-16</b>	1.000	3,800	1.187	3.25	6.00	1.94	2.875	4.500	2.38	2.19	.38	.22	#10	3.00	2.40
<b>DLBCH-20</b>	1.250	4,700	1.500	4.00	7.50	2.50	3.500	5.500	3.00	2.81	.44	.22	#10	3.75	5.00
<b>DLBCH-24</b>	1.500	7,760	1.750	4.75	9.00	2.88	4.125	6.500	3.50	3.25	.50	.28	1/4	4.50	7.80



### Footnotes:

- (1) Rating based upon 2 million inches of travel with the load forces being applied downward on the linear bearing, while in a horizontal application, and based upon 1060 steel shafting (Rockwell 60C).
- (2) Sizes 0.750 and above have a 1/4-28 UNF straight thread access for lubrication.
- (3) This value is the center to center distance (spacing) of the bearings on a single shaft (d<sub>2</sub>).