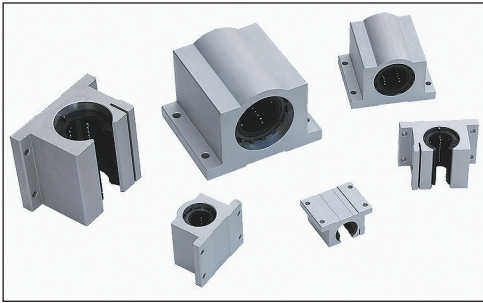


# Ordering Guide - Inch Diameters - SLBCH, SLBOH, DLBCH & DLBOH Series



**DLBCH** - **12** - **CR** - **L**

**Pillow Block Series** \_\_\_\_\_

- SLBCH** - One LBCH bushing per pillow block
- DLBCH** - Two LBCH bushings per pillow block
- SLBOH** - One LBOH bushing per pillow block
- DLBOH** - Two LBOH bushings per pillow block

**Nominal Diameter** \_\_\_\_\_

- 12** - 0.750 inch diameter
- 16** - 1.000 inch diameter
- 20** - 1.250 inch diameter
- 24** - 1.500 inch diameter

**Bearing Options** \_\_\_\_\_

- Standard
- CR** - Corrosion Resistance

**Bearing Lock** \_\_\_\_\_

- None
- L** - Hand Wheel Lock

## Specifications: **SLBCH, SLBOH, DLBCH & DLBOH** Pillow Blocks (self-aligning)

<b>Bearing Housing Type &amp; Finish</b>	Aluminum 6061-T6 Pillow Block, Clear Anodized										
<b>Bearing Seals</b>	Internal Wiper Seals on Both Ends										
<b>Corrosion Resistance</b>	Electroless nickel plated load bushing plates and stainless steel recirculating balls										
<b>Hand Wheel Lock</b>	Optional Aluminum Shaft Clamping Block										
<b>Operating Temperature</b>	0° F to + 185° F										
<b>Maximum Speed</b>	9.8 ft/second (3m/sec)										
<b>Matching Shaft</b>	Class L ( <b>SL</b> series), hardened & ground shafting										
<b>Diameter Tolerance</b>	<table border="1" style="margin-left: auto; margin-right: auto;"> <thead> <tr> <th style="text-align: center;">Nominal Shaft Diameter (inches)</th> <th style="text-align: center;">Shaft Diameter Tolerance (inches)</th> </tr> </thead> <tbody> <tr> <td style="text-align: center;">0.750</td> <td style="text-align: center;">.7495 / .7490</td> </tr> <tr> <td style="text-align: center;">1.000</td> <td style="text-align: center;">.9995 / .9990</td> </tr> <tr> <td style="text-align: center;">1.250</td> <td style="text-align: center;">1.2495 / 1.2490</td> </tr> <tr> <td style="text-align: center;">1.500</td> <td style="text-align: center;">1.4994 / 1.4989</td> </tr> </tbody> </table>	Nominal Shaft Diameter (inches)	Shaft Diameter Tolerance (inches)	0.750	.7495 / .7490	1.000	.9995 / .9990	1.250	1.2495 / 1.2490	1.500	1.4994 / 1.4989
Nominal Shaft Diameter (inches)	Shaft Diameter Tolerance (inches)										
0.750	.7495 / .7490										
1.000	.9995 / .9990										
1.250	1.2495 / 1.2490										
1.500	1.4994 / 1.4989										