

**ARS 12 - PD - 24**

**Aluminum Rail Support**

**Shaft Diameter Supported**

- 8** - 0.500 inch diameter
- 10** - 0.625 inch diameter
- 12** - 0.750 inch diameter
- 16** - 1.000 inch diameter
- 20** - 1.250 inch diameter
- 24** - 1.500 inch diameter
- 32** - 2.000 inch diameter

**Pre-Drilled**

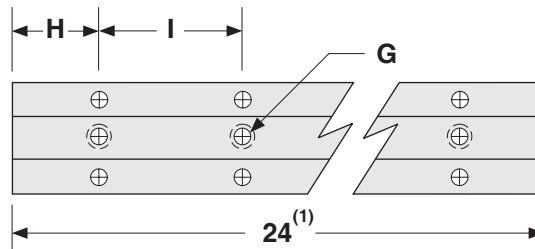
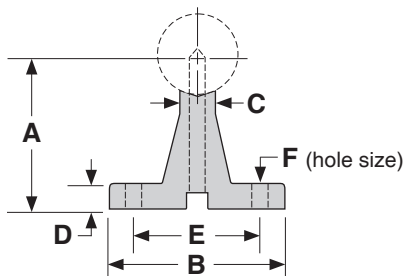
- No mounting hole pattern
- PD** - pre-drilled hole pattern

**Support length**

- 24** - 24 inch length

## Dimensions & Specifications: ARS-PD Shaft Support

| Model Number  |                        | Nominal Shaft Diameter (inches) | Dimensions (inches) |       |      |      |               |           |                |      |      | Support Weight (lbs/in) |
|---------------|------------------------|---------------------------------|---------------------|-------|------|------|---------------|-----------|----------------|------|------|-------------------------|
| Without Holes | With Pre-drilled Holes |                                 | A<br>+/- .002       | B     | C    | D    | E<br>+/- .010 | F<br>hole | G<br>bolt size | H    | I    |                         |
| <b>ARS8</b>   | <b>ARS8-PD</b>         | 0.500                           | 1.125               | 1.500 | .250 | .187 | 1.000         | .169      | #6-32 x 0.87   | 2.00 | 4.00 | .050                    |
| <b>ARS10</b>  | <b>ARS10-PD</b>        | 0.625                           | 1.125               | 1.625 | .312 | .250 | 1.125         | .193      | #8-32 x 0.87   | 2.00 | 4.00 | .063                    |
| <b>ARS12</b>  | <b>ARS12-PD</b>        | 0.750                           | 1.500               | 1.750 | .375 | .250 | 1.250         | .221      | #10-32 x 1.25  | 3.00 | 6.00 | .083                    |
| <b>ARS16</b>  | <b>ARS16-PD</b>        | 1.000                           | 1.750               | 2.125 | .500 | .250 | 1.500         | .281      | 1/4-20 x 1.50  | 3.00 | 6.00 | .108                    |
| <b>ARS20</b>  | <b>ARS20-PD</b>        | 1.250                           | 2.125               | 2.500 | .562 | .312 | 1.875         | .343      | 5/16-18 x 1.75 | 3.00 | 6.00 | .146                    |
| <b>ARS24</b>  | <b>ARS24-PD</b>        | 1.500                           | 2.500               | 3.000 | .687 | .375 | 2.250         | .406      | 3/8-16 x 2.00  | 4.00 | 8.00 | .213                    |
| <b>ARS32</b>  | <b>ARS32-PD</b>        | 2.000                           | 3.250               | 3.750 | .875 | .500 | 2.750         | .531      | 1/2-13 x 3.25  | 4.00 | 8.00 | .342                    |



Material: 6061-T6 aluminum  
Finish: natural finish

Shorter lengths available. Contact the factory.