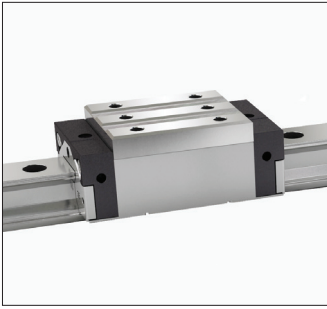


Ordering Guide

ARR & HRR & LRR Series



- * Wide Rail Profile Bearing Blocks
- * Alloy steel bearing, rail, and balls
- * Equal loading in all directions
- * 4 rows of re-circulating balls
- * Standard, long & extra long block
- * Standard and flanged block
- * 4 Different accuracy ranges
- * 3 Different preload values

- * Standard seal option
- * Any rail cut to specific length
- * *Optional* - Tapped bottom rail
- * *Optional* - Ball chain block

ARR U 35 M N S C V1 H - 2 - 1260 - 30 - 30

Series Type _____

ARR - Standard Height Roller Linear Guide
HRR - High Profile Roller Linear Guide
LRR - Low Profile Roller Linear Guide

Rail Type _____

- Standard **U** - Tapped from bottom

Profile Size _____

35 - 35 mm **45** - 45 mm

Block Width _____

M - Standard **F** - Flanged

Block Length _____

N - Standard **L** - Long **XL** - Extra Long

Block Seals _____

S - Standard

Block Bearings _____

- Standard **C** - Ball Chain

Preload Class _____

V0 - Light **V1** - Medium **V2** - Heavy

Accuracy Grade _____

H - High **P** - Precision **SP** - Super Precision **UP** - Ultra Precision

Number of Blocks _____

2 - Number of blocks on each rail

Rail Length _____

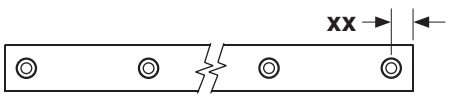
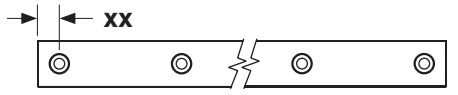
xxxx - Overall rail length (mm)

Start Hole _____

xx - Distance from end (mm)

End Hole _____

xx - Distance from end (mm)



Specifications subject to change without notice