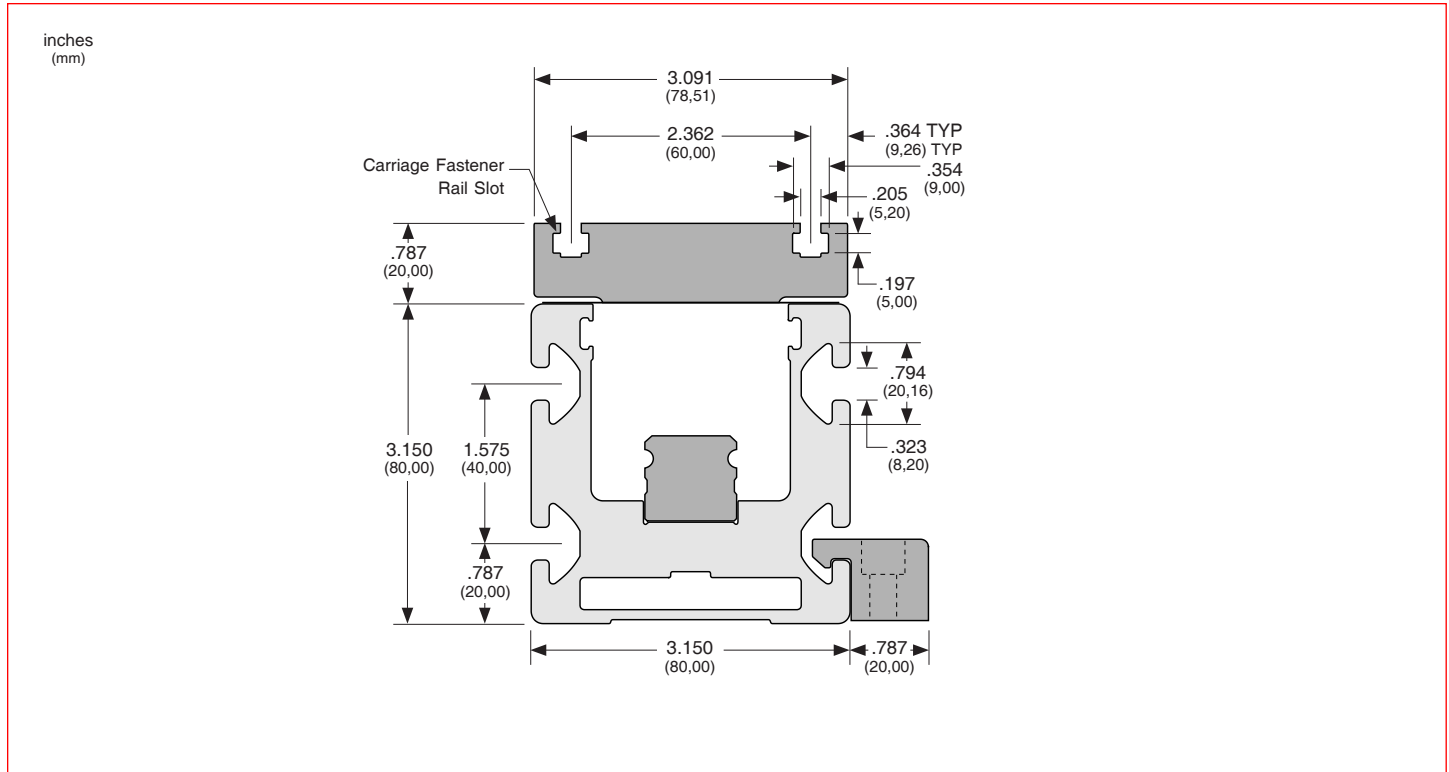


Carriage Fastener Rail & Base Mounting Brackets

LINTECH provides the user with 2 vital optional accessories. The carriage fastener rails slide into the two slots on the 550 series carriage. These fastener rails give the user the ability to mount their load to the 550 series carriage. From 1 to 3 fastener rails can be used in each carriage slot. The base mounting brackets give the user the ability to mount the 550 series table to a mounting surface. These mounting brackets attach anywhere along the bottom T-slot's on both sides of the 550 series table.

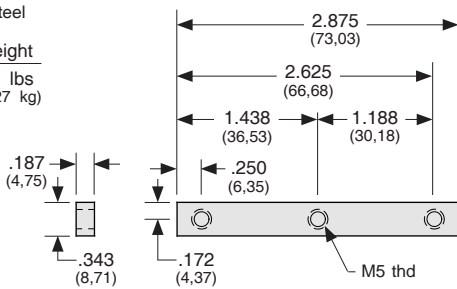


Carriage Fastener Rail
(part # 201174)

Base Mounting Brackets
(part # 46627)

Material
Stainless Steel

Weight
.06 lbs
(0,027 kg)



Weight
.19 lbs
(0,086 kg)

Material
Aluminum

