

**20 06 06 - WC1 - 1 - S013 - M02 - C165 - L01 - E00 - B00**

**Table Series**

**Carriage Length**

**06** - 6 inches      **12** - 12 inches

**Travel Length** (see pages H-6 & H-8)

**06** - 6 to 55 inches

**Waycovers**

**WC0** - with no waycovers    **WC1** - with waycovers

**Carriage Inserts** (see pages H-7 & H-9)

**1** - English mount      **2** - Metric mount

**Screw Options** (see pages H-18 to H-21)

*Rolled ball screws*

**S013** - .750 x .200 NPL  
**S014** - .750 x .200 PL  
**S015** - .750 x .200 NPL(T)  
**S016** - .750 x .200 PL(T)  
**S017** - .750 x .500 NPL  
**S018** - .750 x .500 PL  
**S019** - .750 x .500 NPL(T)  
**S020** - .750 x .500 PL(T)

*Precision ball screws*

**S122** - .750 x .200 NPL  
**S123** - .750 x .200 PL  
**S124** - 20 x 5 NPL  
**S125** - 20 x 5 PL  
**S128** - 20 x 20 NPL  
**S129** - 20 x 20 PL

*Ground ball screws*

**S216** - .750 x .200 PL  
**S217** - .750 x .500 PL  
**S221** - 20 x 5 PL  
**S222** - 20 x 20 PL

*Rolled acme screws*

**S306** - .750 x .100 NPL  
**S307** - .750 x .100 PL  
**S308** - .750 x .200 NPL  
**S309** - .750 x .200 PL

**S999** - other

**Motor Mount** (see pages H-7 & H-9, H-24 to H-25)

**M00** - none

**M01** - hand crank

**M99** - other

**M02** - NEMA 23 mount (E)

**M03** - NEMA 23 mount (M)

**M04** - NEMA 34 mount (E)

**M05** - NEMA 34 mount (M)

**M08** - NEMA 34 (RH) wrap

**M09** - NEMA 34 (LH) wrap

**M10** - NEMA 42 mount (E)

**M11** - NEMA 42 mount (M)

**M12** - NEMA 42 (RH) wrap

**M13** - NEMA 42 (LH) wrap

**Coupling Options** (see pages H-22 to H-23)

**C000** - none

**C999** - other

**C056 to C063** - C125

**C084 to C090** - C150

**C165 to C174** - H131

**C201 to C211** - H163

**C445 to C454** - G126

**C481 to C491** - G158

**Limit & Home Switches** (see pages H-15 to H-17)

**L00** - no switches

**L99** - other

EOT & home switches

EOT switches only

home switch only

Mechanical

**L01**

**L02**

**L03**

Reed

**L04**

**L05**

**L06**

Hall

**L07**

**L08**

**L09**

Prox (NPN)

**L10**

**L11**

**L12**

Prox (PNP)

**L13**

**L14**

**L15**

**Encoder Options** (see page H-27)

**E00** - none

**E01** - rotary (500 lines/rev)

**E02** - rotary (1000 lines/rev)

**E03** - rotary (1270 lines/rev)

**E10** - linear (2500 lines/inch)

**E11** - linear (125 lines/mm)

**E99** - other

**Power-off Brakes** (see page H-26)

**B00** - none

**B03** - 24 VDC

**B04** - 90 VDC

**B99** - other

(E) - English Interface  
 (LH) - Left Hand  
 (M) - Metric Interface

(NPL) - Non Preloaded  
 (PL) - Preloaded  
 (RH) - Right Hand  
 (T) - Turcite Nut

## Specifications

| Load Capacities                          |                                                                      | 6 inch (2 bearing) Carriage |                            | 12 inch (4 bearing) Carriage |                             |
|------------------------------------------|----------------------------------------------------------------------|-----------------------------|----------------------------|------------------------------|-----------------------------|
| <b>Dynamic Horizontal</b>                | 2 million inches (50 km) of travel                                   | 4,400 lbs                   | ( 1996 kg)                 | 8,800 lbs                    | ( 3992 kg)                  |
| <b>Dynamic Horizontal</b>                | 50 million inches (1270 km) of travel                                | 1,500 lbs                   | ( 680 kg)                  | 3,000 lbs                    | ( 1360 kg)                  |
| <b>Static Horizontal</b>                 |                                                                      | 7,600 lbs                   | ( 3447 kg)                 | 15,200 lbs                   | ( 6895 kg)                  |
| <b>Dynamic Roll Moment</b>               | 2 million inches (50 km) of travel                                   | 790 ft-lbs                  | ( 1071 N-m)                | 1,580 ft-lbs                 | ( 2142 N-m)                 |
| <b>Dynamic Roll Moment</b>               | 50 million inches (1270 km) of travel                                | 270 ft-lbs                  | ( 366 N-m)                 | 540 ft-lbs                   | ( 732 N-m)                  |
| <b>Static Roll Moment</b>                |                                                                      | 1,365 ft-lbs                | ( 1851 N-m)                | 2,730 ft-lbs                 | ( 3701 N-m)                 |
| <b>Dyn. Pitch &amp; Yaw Moment</b>       | 2 million inches (50 km) of travel                                   | 175 ft-lbs                  | ( 237 N-m)                 | 2,485 ft-lbs                 | ( 3369 N-m)                 |
| <b>Dyn. Pitch &amp; Yaw Moment</b>       | 50 million inches (1270 km) of travel                                | 58 ft-lbs                   | ( 79 N-m)                  | 845 ft-lbs                   | ( 1146 N-m)                 |
| <b>Static Pitch &amp; Yaw Moment</b>     |                                                                      | 300 ft-lbs                  | ( 407 N-m)                 | 4,300 ft-lbs                 | ( 5830 N-m)                 |
| <b>Each Bearing Dyn. Capacity</b>        | 2 million inches (50 km) of travel                                   | 2,200 lbs                   | ( 998 kg)                  | 2,200 lbs                    | ( 998 kg)                   |
| <b>Each Bearing Dyn. Capacity</b>        | 50 million inches (1270 km) of travel                                | 750 lbs                     | ( 340 kg)                  | 750 lbs                      | ( 340 kg)                   |
| <b>Each Bearing Static Load Capacity</b> |                                                                      | 3,800 lbs                   | ( 1724 kg)                 | 3,800 lbs                    | ( 1724 kg)                  |
| <b>Thrust Force Capacity</b>             | 10 million screw revolutions                                         | 1,050 lbs                   | ( 476 kg)                  | 1,050 lbs                    | ( 476 kg)                   |
| <b>Thrust Force Capacity</b>             | 500 million screw revolutions                                        | 270 lbs                     | ( 122 kg)                  | 270 lbs                      | ( 122 kg)                   |
| <b>Maximum Acceleration</b>              |                                                                      | 386 in/sec <sup>2</sup>     | ( 9,8 m/sec <sup>2</sup> ) | 772 in/sec <sup>2</sup>      | ( 19,6 m/sec <sup>2</sup> ) |
| <b>d<sub>1</sub></b>                     | Center to center distance (spread) between the two rails             | 5.280 in                    | (134,1 mm)                 | 5.280 in                     | (134,1 mm)                  |
| <b>d<sub>2</sub></b>                     | Center to center distance (spacing) of the bearings on a single rail |                             | -                          | 7.870 in                     | (199,9 mm)                  |
| <b>d<sub>r</sub></b>                     | Center distance of the bearing to top of carriage plate surface      | 1.900 in                    | ( 48,3 mm)                 | 1.900 in                     | ( 48,3 mm)                  |

| Other                                          | For 6 inch (2 bearing) & 12 inch (4 bearing) Carriages                    |
|------------------------------------------------|---------------------------------------------------------------------------|
| <b>Table Material</b>                          | Base, Carriage, End Plates, & Cover Plate option - 6061 anodized aluminum |
| <b>Linear Rail Material</b>                    | Case Hardened Steel                                                       |
| <b>Screw Material</b> (see pages H-18 to H-21) | Acme Screw - Stainless Steel                                              |
| <b>Screw Material</b> (see pages H-18 to H-21) | Rolled Ball, Precision Ball, & Ground Ball - Case Hardened Steel          |
| <b>Straightness</b>                            | < 0.00004 in/in (< 1,02 microns/25mm)                                     |
| <b>Flatness</b>                                | < 0.00004 in/in (< 1,02 microns/25mm)                                     |
| <b>Orthogonality</b> (multi-axis systems)      | < 15 arc-seconds                                                          |
| <b>Friction Coefficient</b>                    | < 0.01                                                                    |
| <b>Motor Mount</b>                             | NEMA 23 & 34 Mounts, Metric Mounts, Motor Wraps, and Hand Crank Option    |
| <b>Coupling</b>                                | Three (3) different styles available                                      |
| <b>Waycover Material</b>                       | Hypilon Polyester Bellows firmly mounted to carriage & end plates         |

## Dimensions & Specifications

- Without Waycovers -

| Model Number      | Travel Length<br>inches<br>(mm) | Table Dimensions<br>inches<br>(mm) |                   | Mounting Dimensions<br>inches<br>(mm) |    |    | Screw Length<br>inches<br>(mm) | Table <sup>(1)</sup><br>Weight<br>lbs<br>(kg) |
|-------------------|---------------------------------|------------------------------------|-------------------|---------------------------------------|----|----|--------------------------------|-----------------------------------------------|
|                   |                                 | A                                  | B                 | C                                     | D  | M  |                                |                                               |
| <b>200607-WC0</b> | 7<br>(175)                      | 14.75<br>(374,6)                   | 17.25<br>(438,1)  | 2.120<br>(53,8)                       | 3  | 8  | 16.37<br>(416)                 | 38.3<br>(17,4)                                |
| <b>200614-WC0</b> | 14<br>(355)                     | 21.62<br>(549,1)                   | 24.12<br>(612,6)  | 2.060<br>(52,3)                       | 5  | 12 | 23.24<br>(590)                 | 47.4<br>(21,5)                                |
| <b>200621-WC0</b> | 21<br>(530)                     | 28.50<br>(723,9)                   | 31.00<br>(787,4)  | 2.000<br>(50,8)                       | 7  | 16 | 30.12<br>(765)                 | 56.5<br>(25,6)                                |
| <b>200628-WC0</b> | 28<br>(710)                     | 35.25<br>(895,3)                   | 37.75<br>(958,8)  | 1.870<br>(47,5)                       | 9  | 20 | 36.87<br>(936)                 | 65.6<br>(29,8)                                |
| <b>200635-WC0</b> | 35<br>(885)                     | 42.25<br>(1073,1)                  | 44.75<br>(1136,6) | 1.870<br>(47,5)                       | 11 | 24 | 43.87<br>(1114)                | 74.7<br>(33,9)                                |
| <b>200641-WC0</b> | 41<br>(1040)                    | 49.00<br>(1244,6)                  | 51.50<br>(1308,1) | 1.750<br>(44,4)                       | 13 | 28 | 50.62<br>(1286)                | 83.8<br>(38,0)                                |
| <b>200655-WC0</b> | 55<br>(1395)                    | 62.75<br>(1593,8)                  | 65.25<br>(1657,3) | 1.620<br>(41,1)                       | 17 | 36 | 64.37<br>(1635)                | 100.0<br>(45,4)                               |
| <b>201207-WC0</b> | 7<br>(175)                      | 20.75<br>(527,0)                   | 23.25<br>(590,5)  | 1.620<br>(41,1)                       | 5  | 12 | 22.37<br>(568)                 | 54.3<br>(24,6)                                |
| <b>201214-WC0</b> | 14<br>(355)                     | 27.62<br>(701,5)                   | 30.12<br>(765,0)  | 1.560<br>(39,6)                       | 7  | 16 | 29.24<br>(743)                 | 63.4<br>(28,8)                                |
| <b>201221-WC0</b> | 21<br>(530)                     | 34.50<br>(876,3)                   | 37.00<br>(939,8)  | 1.500<br>(38,1)                       | 9  | 20 | 36.12<br>(917)                 | 72.5<br>(32,9)                                |
| <b>201228-WC0</b> | 28<br>(710)                     | 41.25<br>(1047,7)                  | 43.75<br>(1111,2) | 1.370<br>(34,8)                       | 11 | 24 | 42.87<br>(1089)                | 81.6<br>(37,0)                                |
| <b>201235-WC0</b> | 35<br>(885)                     | 48.25<br>(1225,5)                  | 50.75<br>(1289,0) | 1.370<br>(34,8)                       | 13 | 28 | 49.87<br>(1267)                | 90.7<br>(41,1)                                |
| <b>201241-WC0</b> | 41<br>(1040)                    | 55.00<br>(1397,0)                  | 57.50<br>(1460,5) | 1.250<br>(31,7)                       | 15 | 32 | 56.62<br>(1438)                | 99.8<br>(45,3)                                |
| <b>201255-WC0</b> | 55<br>(1395)                    | 68.75<br>(1746,2)                  | 71.25<br>(1809,7) | 1.120<br>(28,4)                       | 19 | 40 | 70.37<br>(1787)                | 117.0<br>(53,1)                               |

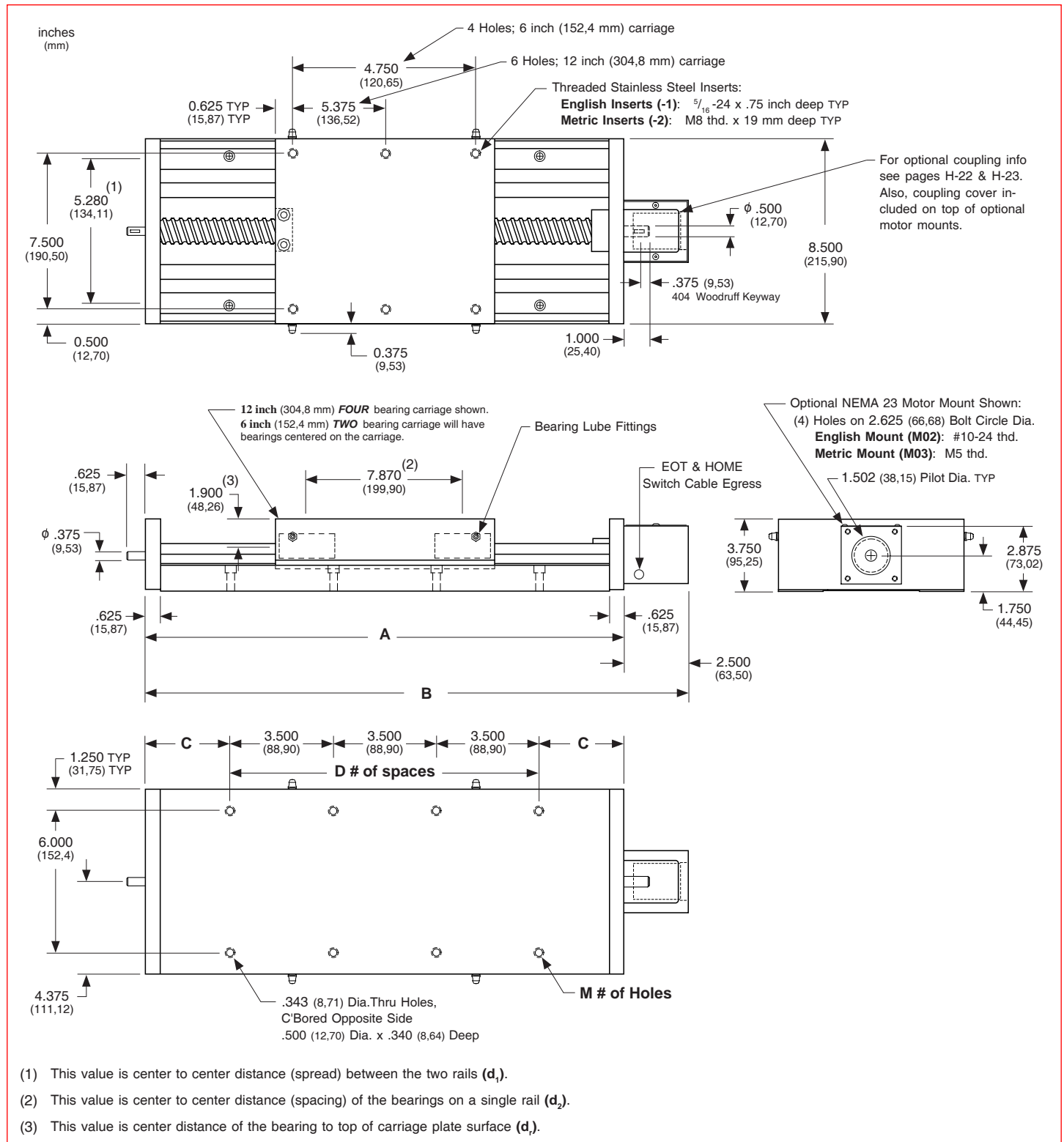
- └ 06 = 6 inch (152,4 mm) carriage length; 2 bearings; carriage weight = 11.0 lbs. (4,99 kg)
- └ 12 = 12 inch (304,8 mm) carriage length; 4 bearings; carriage weight = 19.0 lbs. (8,62 kg)

### Footnotes:

(1) Weight shown is with a 0.750 inch (20 mm) diameter screw, a NEMA 23 motor mount [0.34 lbs (0,16 kg)], and a C125 style [0.22 lbs (0,10 kg)] coupling.

Dimensions

- Without Waycovers -



**Note:** Any 200 series table can be mounted on top of any second 200 series, in order to create X-Y multiple axis configurations. The carriage's threaded stainless steel insert hole pattern DOES NOT exactly match the base mounting hole pattern on each table, therefore machining of the bottom axis carriage plate is required. Contact *LINTECH*.

## Dimensions & Specifications

- With Waycovers -

| Model Number      | Travel Length<br>inches<br>(mm) | Table Dimensions<br>inches<br>(mm) |                   | Mounting Dimensions<br>inches<br>(mm) |    |    | Screw Length<br>inches<br>(mm) | Table <sup>(1)</sup><br>Weight<br>lbs<br>(kg) |
|-------------------|---------------------------------|------------------------------------|-------------------|---------------------------------------|----|----|--------------------------------|-----------------------------------------------|
|                   |                                 | A                                  | B                 | C                                     | D  | M  |                                |                                               |
| <b>200606-WC1</b> | 6<br>(150)                      | 14.75<br>(374,6)                   | 17.25<br>(438,1)  | 2.120<br>(53,8)                       | 3  | 8  | 16.37<br>(416)                 | 40.0<br>(18,1)                                |
| <b>200612-WC1</b> | 12<br>(300)                     | 21.62<br>(549,1)                   | 24.12<br>(612,6)  | 2.060<br>(52,3)                       | 5  | 12 | 23.24<br>(590)                 | 50.0<br>(22,7)                                |
| <b>200618-WC1</b> | 18<br>(455)                     | 28.50<br>(723,9)                   | 31.00<br>(787,4)  | 2.000<br>(50,8)                       | 7  | 16 | 30.12<br>(765)                 | 60.0<br>(27,2)                                |
| <b>200624-WC1</b> | 24<br>(605)                     | 35.25<br>(895,3)                   | 37.75<br>(958,8)  | 1.870<br>(47,5)                       | 9  | 20 | 36.87<br>(936)                 | 70.0<br>(31,8)                                |
| <b>200630-WC1</b> | 30<br>(760)                     | 42.25<br>(1073,1)                  | 44.75<br>(1136,6) | 1.870<br>(47,5)                       | 11 | 24 | 43.87<br>(1114)                | 80.0<br>(36,3)                                |
| <b>200636-WC1</b> | 36<br>(910)                     | 49.00<br>(1244,6)                  | 51.50<br>(1308,1) | 1.750<br>(44,4)                       | 13 | 28 | 50.62<br>(1286)                | 90.0<br>(40,8)                                |
| <b>200648-WC1</b> | 48<br>(1215)                    | 62.75<br>(1593,8)                  | 65.25<br>(1657,3) | 1.620<br>(41,1)                       | 17 | 36 | 64.37<br>(1635)                | 108.0<br>(49,0)                               |
| <b>201206-WC1</b> | 6<br>(150)                      | 20.75<br>(527,0)                   | 23.25<br>(590,5)  | 1.620<br>(41,1)                       | 5  | 12 | 22.37<br>(568)                 | 56.0<br>(25,4)                                |
| <b>201212-WC1</b> | 12<br>(300)                     | 27.62<br>(701,5)                   | 30.12<br>(765,0)  | 1.560<br>(39,6)                       | 7  | 16 | 29.24<br>(743)                 | 66.0<br>(29,9)                                |
| <b>201218-WC1</b> | 18<br>(455)                     | 34.50<br>(876,3)                   | 37.00<br>(939,8)  | 1.500<br>(38,1)                       | 9  | 20 | 36.12<br>(917)                 | 76.0<br>(34,5)                                |
| <b>201224-WC1</b> | 24<br>(605)                     | 41.25<br>(1047,7)                  | 43.75<br>(1111,2) | 1.370<br>(34,8)                       | 11 | 24 | 42.87<br>(1089)                | 86.0<br>(39,0)                                |
| <b>201230-WC1</b> | 30<br>(760)                     | 48.25<br>(1225,5)                  | 50.75<br>(1289,0) | 1.370<br>(34,8)                       | 13 | 28 | 49.87<br>(1267)                | 96.0<br>(43,6)                                |
| <b>201236-WC1</b> | 36<br>(910)                     | 55.00<br>(1397,0)                  | 57.50<br>(1460,5) | 1.250<br>(31,7)                       | 15 | 32 | 56.62<br>(1438)                | 106.0<br>(48,1)                               |
| <b>201248-WC1</b> | 48<br>(1215)                    | 68.75<br>(1746,2)                  | 71.25<br>(1809,7) | 1.120<br>(28,4)                       | 19 | 40 | 70.37<br>(1787)                | 125.0<br>(56,7)                               |

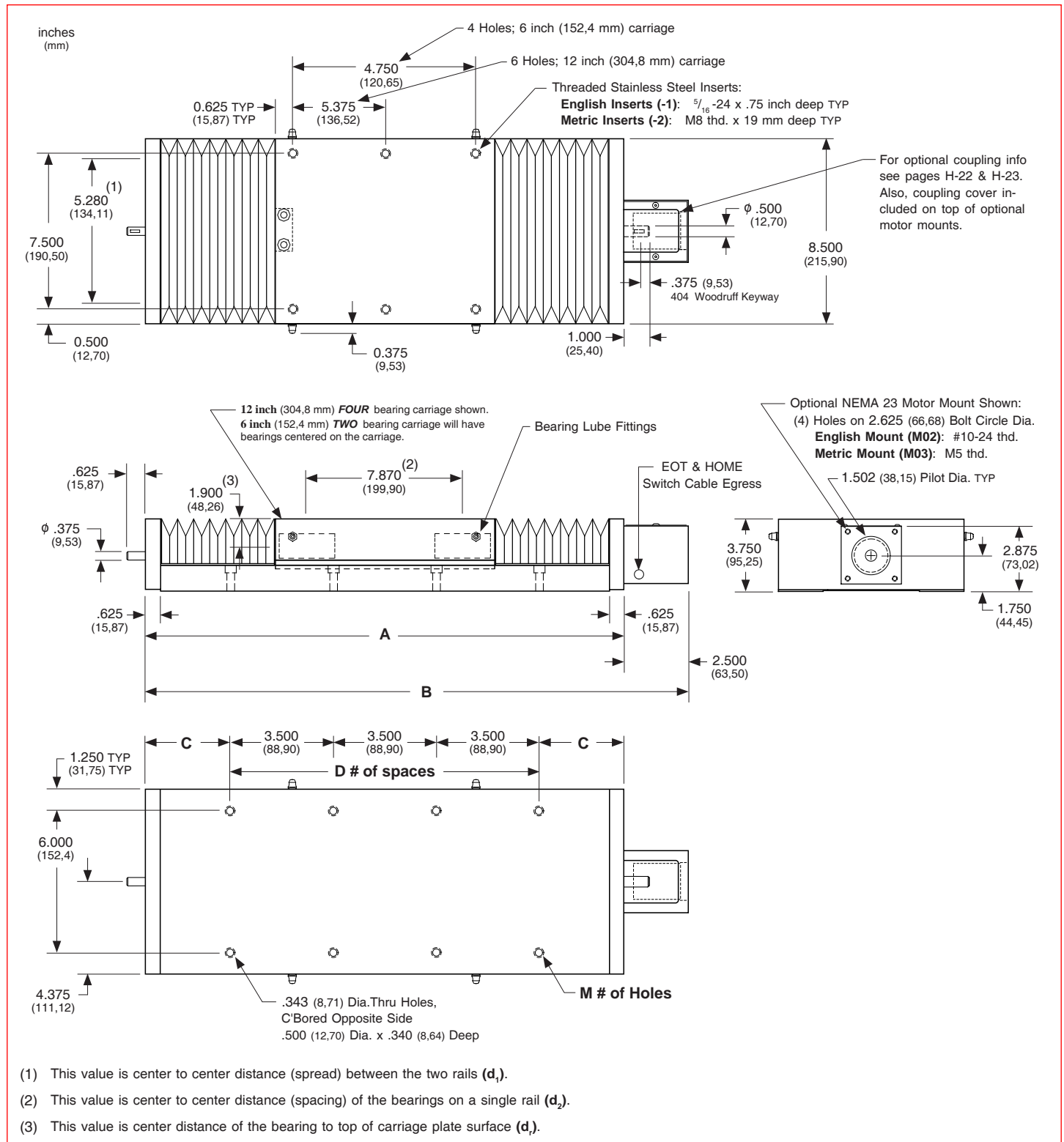
- └ 06 = 6 inch (152,4 mm) carriage length; 2 bearings; carriage weight = 11.0 lbs. (4,99 kg)
- └ 12 = 12 inch (304,8 mm) carriage length; 4 bearings; carriage weight = 19.0 lbs. (8,62 kg)

### Footnotes:

(1) Weight shown is with a 0.750 inch (20 mm) diameter screw, a NEMA 23 motor mount [0.34 lbs (0,16 kg)], and a C125 style [0.22 lbs (0,10 kg)] coupling.

Dimensions

- With Waycovers -



**Note:** Any 200 series table can be mounted on top of any second 200 series, in order to create X-Y multiple axis configurations. The carriage's threaded stainless steel insert hole pattern DOES NOT exactly match the base mounting hole pattern on each table, therefore machining of the bottom axis carriage plate is required. Contact *LINTECH*.